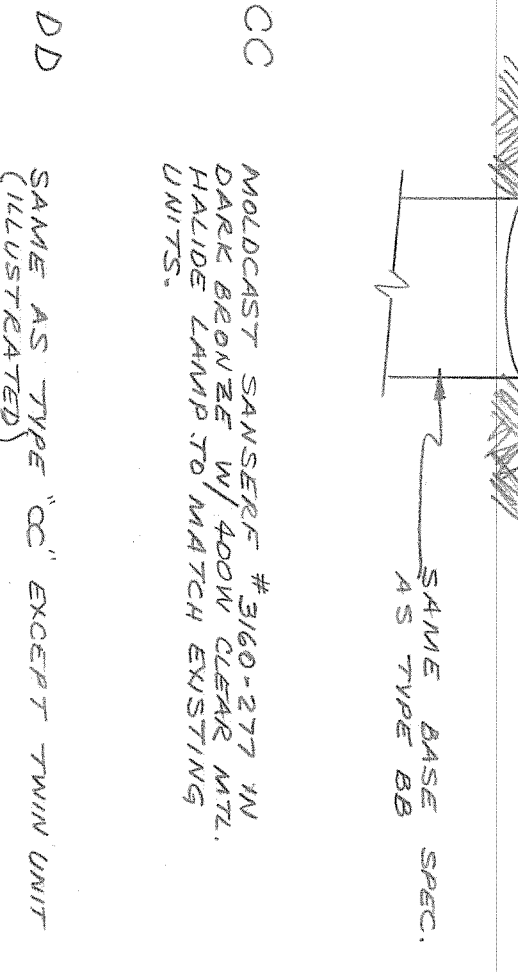
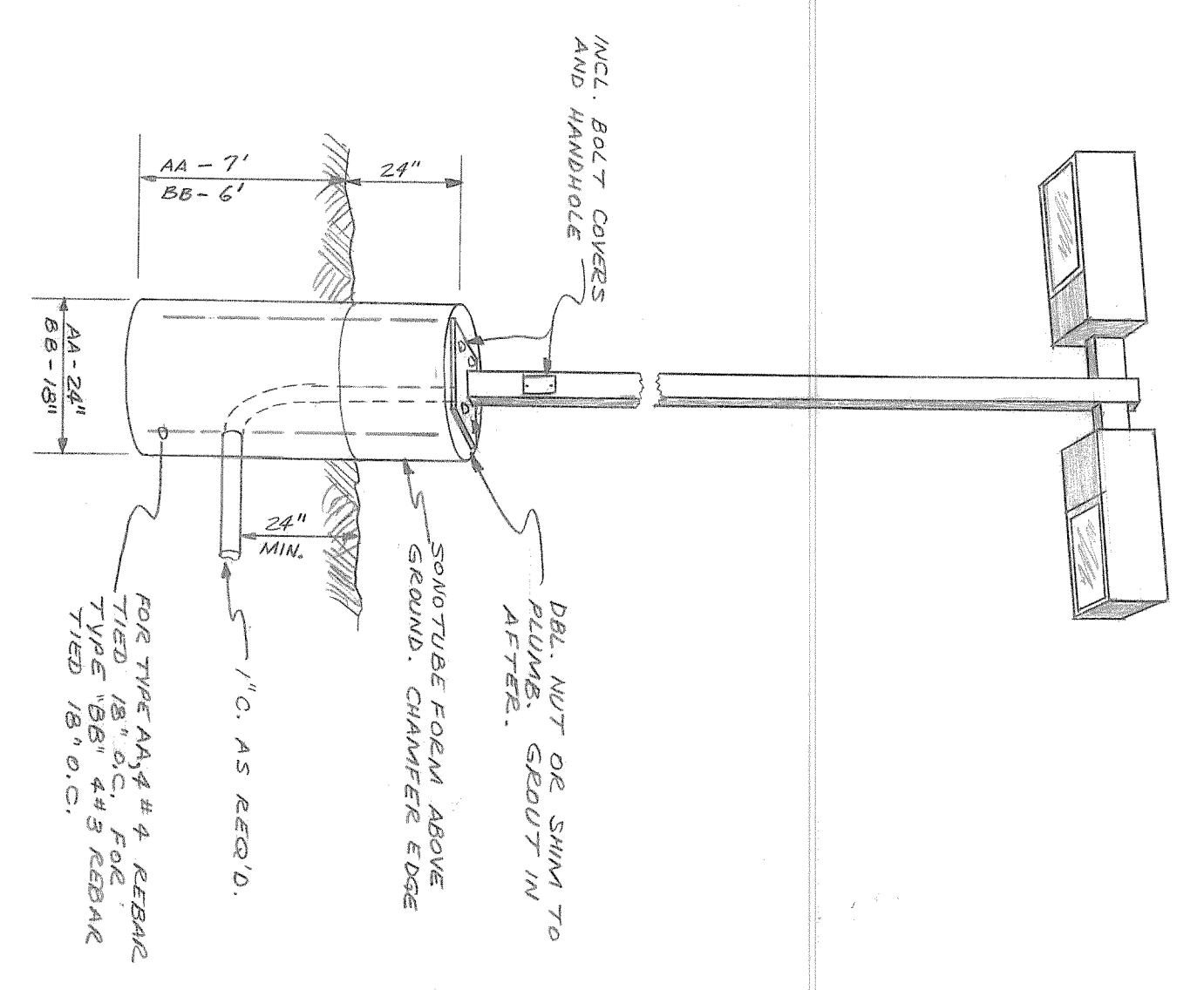


- 1 TRUNK CONDUITS IN END BELTS, GROUT BLOCK-OUT
  - 2 ASSEMBLY OF EXISTING MOLD #371(H) 35KV LOAD BREAK SW. WITH 4 WAY W/INTERRUPTOR, ONE STAKE-OUT PAD, AND ONE HEAD END RECEPTACLE FOR SPARK BUSHING.
  - 3 35KV TRUNK CONDUIT TO BE INSTALLED FROM EXISTING WALL TO CUT-GOING WINDOW ON NORTH EAST.
  - 4 1/2" X 1/8" GROUND ROD DRIVEN FULL DEPTH.
- PROVIDE FILING EYES IN SOUTH & WEST WALLS

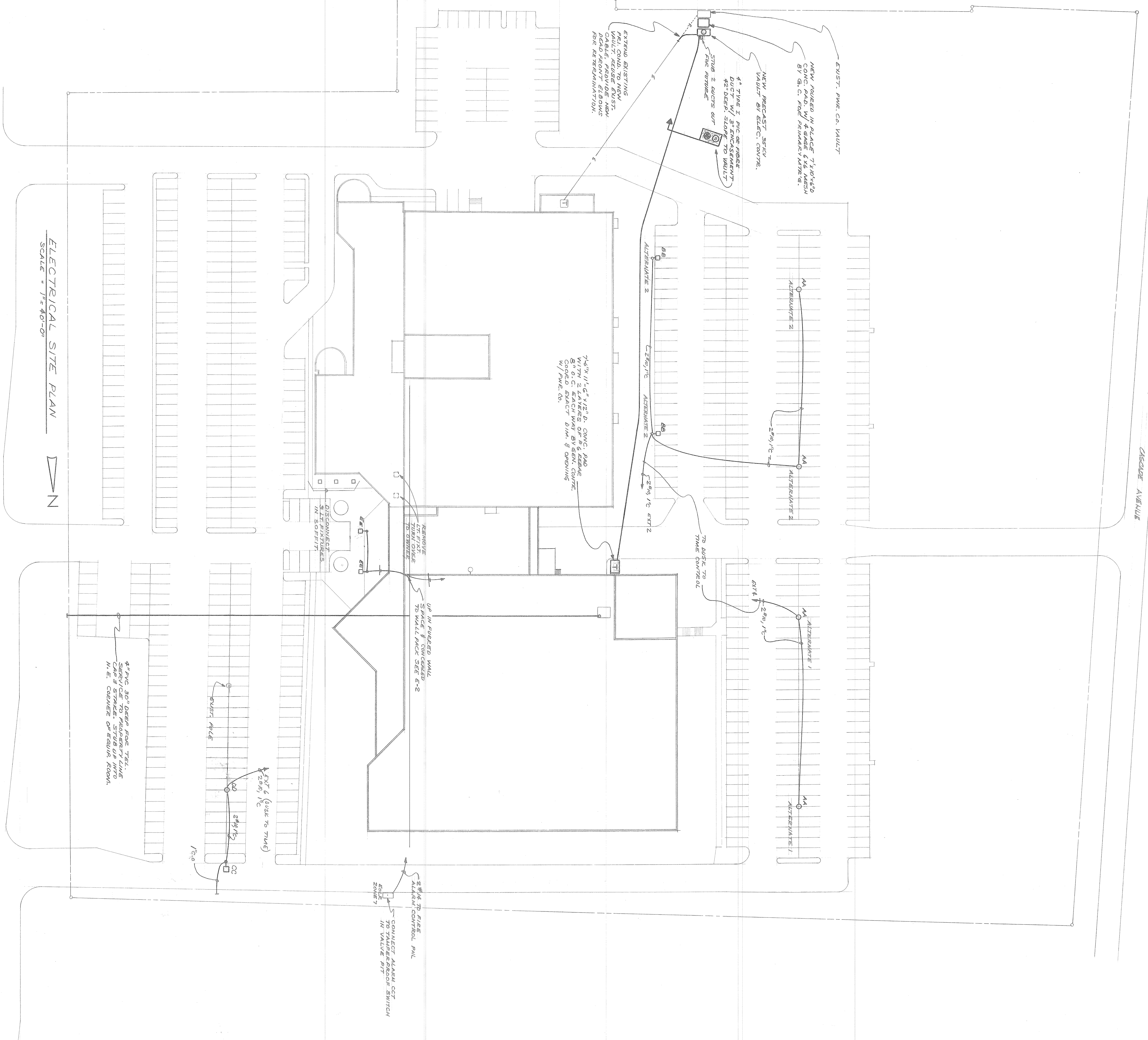
DETAIL OF NEW 35KV VAULT



NOTE  
ALL LIGHT POLE BASES BY GENERAL CONTRACTOR. ELECTRICAL TO FINISH STUB TO GEN. CONTR.

AA GMAECO # H 750-277-400M-H-BK4 M8 PLUMB MTR ON 3" SWIMMS. STANCHION ALUM. POLE IN BRONZE FIN.  
BB SMALLER SINGLE UNIT - GMAECO # H 750-277-400M-H-BK4 ON 2" SWIMMS. & SAME LAMP.

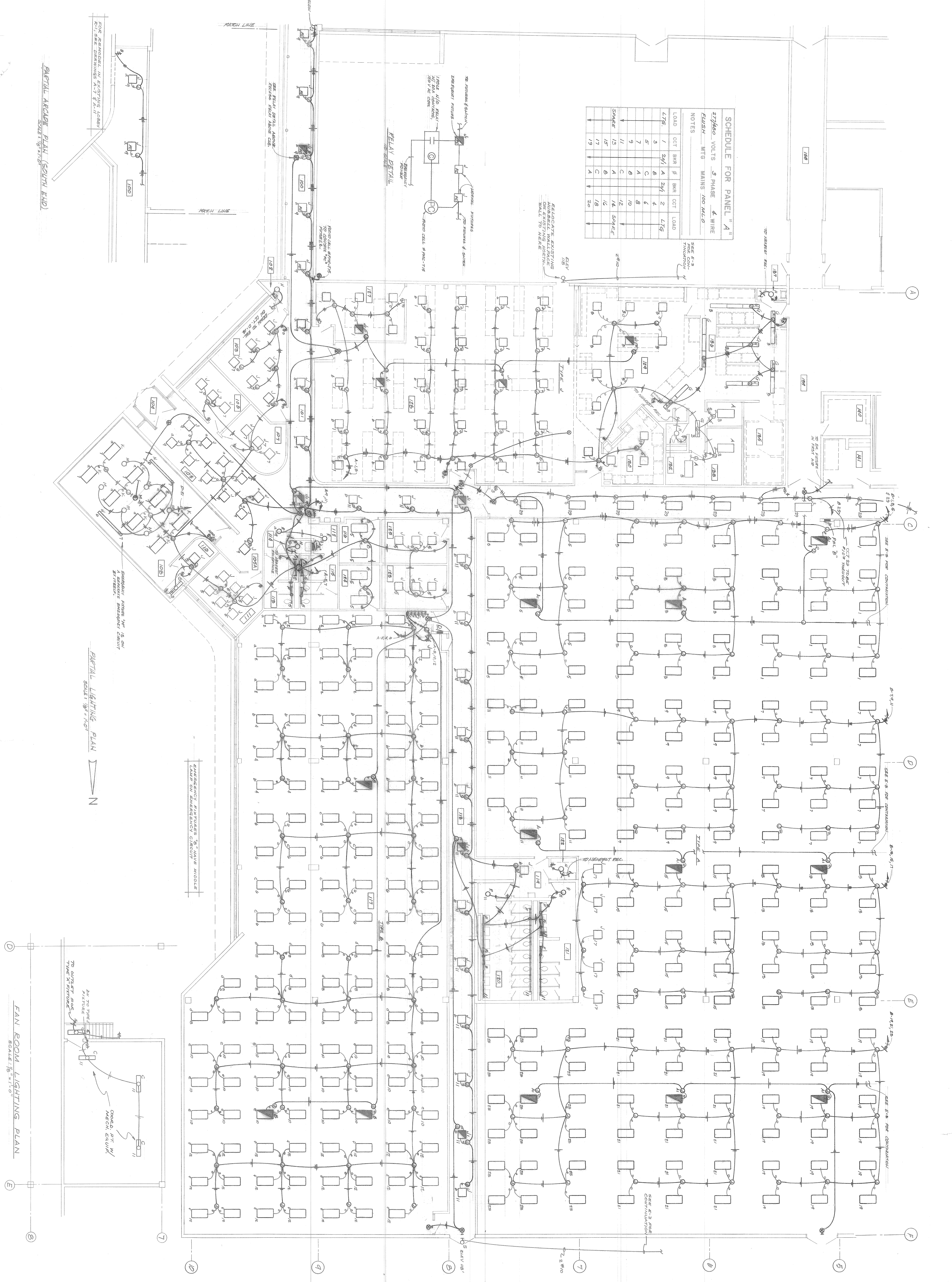
EE GMAECO # ED 1013-277 BLYS-H-BK4 WITH CLEAR M8 PLUMB MTR ON 3" SWIMMS. STANCHION ALUM. POLE IN BRONZE FIN. PROVIDE 1/2" DIA X 3/8" D. GAWC BASE. FINISH WITH BRONZE.

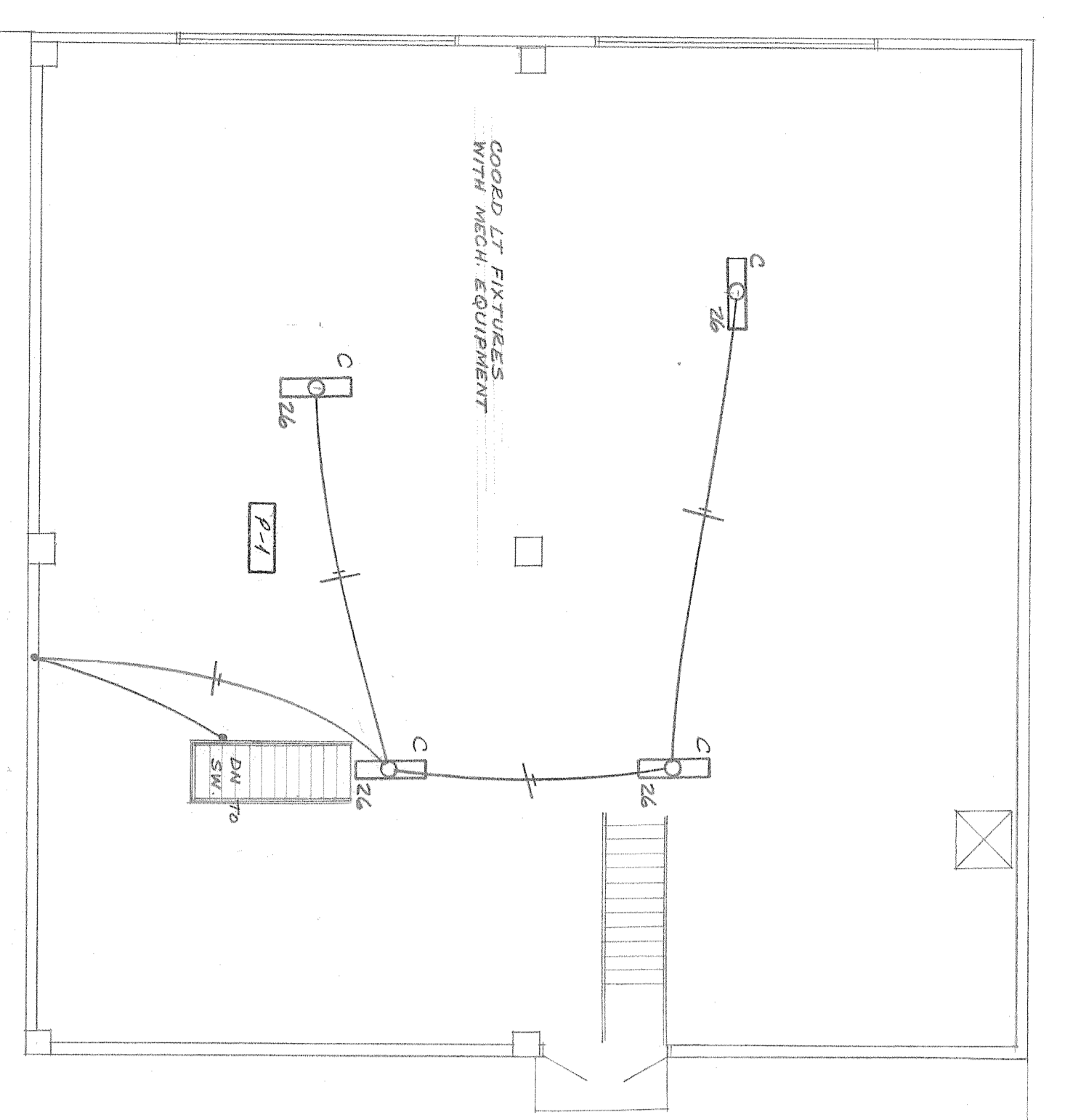


ELECTRICAL SITE PLAN  
SCALE - 1/8" = 1'-0"

SCHEDULE FOR PANEL "A"									
LOAD	CCT	BKR	Ø	BKR	CCT	LOAD			
475	1	24/1	A	24/1	2	475			
5	3		B		4				
7	7		A		8				
9	9		B		10				
11	11		C		12	3045C			
13	13		A		14	3045C			
15	15		C		16				
17	17		C		18				
19	19		A		20				

277500 VOLTS 3 PHASE 4 WIRE  
 FLUSH MTG MAINS 200 MFD  
 NOTES  
 SEE E-3 FOR CONTINUATION

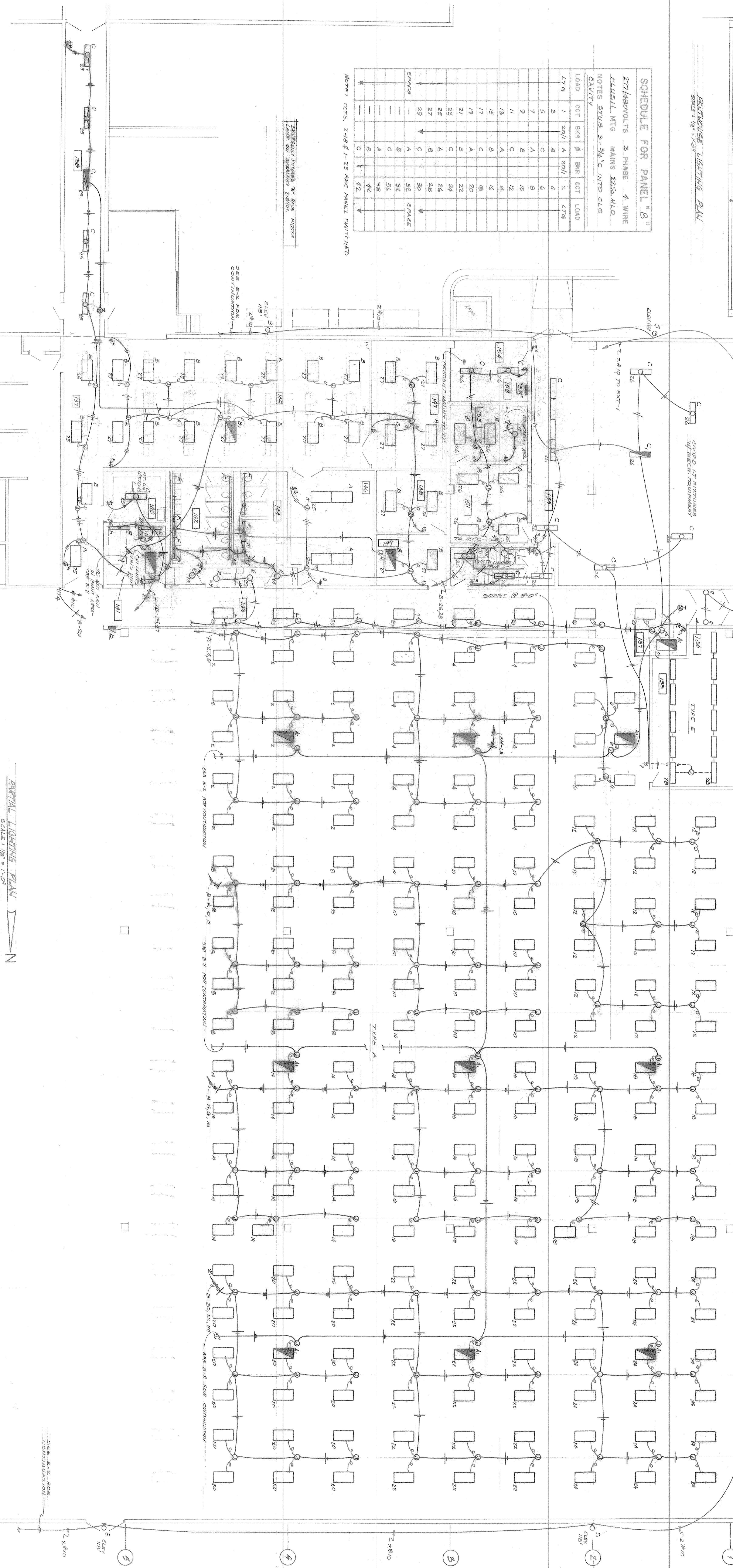




**SCHEDULE FOR PANEL "B"**  
 277/480VOLTS 3 PHASE 4 WIRE  
 FUSED MTG MAINS 225A ALC  
 NOTES: STUBS 3-3/4" C. AUTO CLG  
 CAVITY

LOAD	CCT	BRR	β	BRR	CCT	LOAD
1	20/1	A	20/1	2	4	278
2	—	B	—	4	—	—
3	—	C	—	6	—	—
4	—	A	—	7	—	—
5	—	B	—	8	—	—
6	—	C	—	9	—	—
7	—	A	—	10	—	—
8	—	B	—	11	—	—
9	—	C	—	12	—	—
10	—	A	—	13	—	—
11	—	B	—	14	—	—
12	—	C	—	15	—	—
13	—	A	—	16	—	—
14	—	B	—	17	—	—
15	—	C	—	18	—	—
16	—	A	—	19	—	—
17	—	B	—	20	—	—
18	—	C	—	21	—	—
19	—	A	—	22	—	—
20	—	B	—	23	—	—
21	—	C	—	24	—	—
22	—	A	—	25	—	—
23	—	B	—	26	—	—
24	—	C	—	27	—	—
25	—	A	—	28	—	—
26	—	B	—	29	—	—
27	—	C	—	30	—	—
28	—	A	—	31	—	—
29	—	B	—	32	—	—
30	—	C	—	33	—	—
31	—	A	—	34	—	—
32	—	B	—	35	—	—
33	—	C	—	36	—	—
34	—	A	—	37	—	—
35	—	B	—	38	—	—
36	—	C	—	39	—	—
37	—	A	—	40	—	—
38	—	B	—	41	—	—
39	—	C	—	42	—	—
40	—	A	—	43	—	—
41	—	B	—	44	—	—
42	—	C	—	45	—	—

NOTE: CCTS. 2-1/8" β-1-29 ARE PANEL SWITCHED



AERIAL LIGHTING PLAN  
 SCALE: 1/8" = 1'-0"

John James Wallace & Associates Architects a.i.a.  
 102 North Cascade Avenue, 300  
 Colorado Springs, Colorado 80903  
 Telephone: 303-632-2623

TRW CS-3  
 3650 North Nevada Avenue  
 Colorado Springs, Colorado 80907

Professional Engineer  
 License No. 10000  
 State of Colorado

drawing title:  
 LIGHTING PLAN  
 WEST HALF

drawn:  
 CVA & WGL

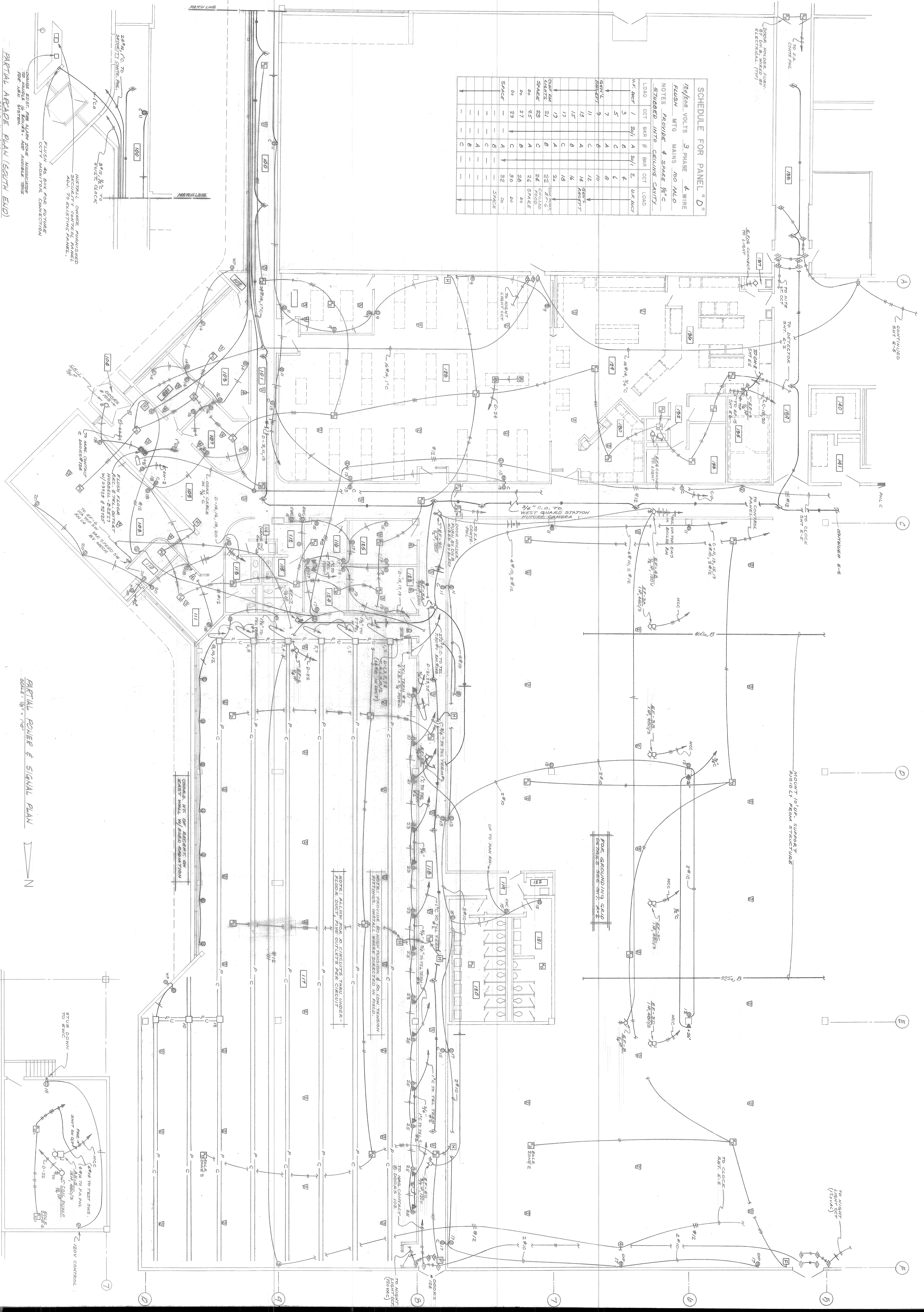
checked:  
 G.W.K.

issued:  
 1/19/81

revised:

Jjwa 7904  
 drawing of 8

SCHEDULE FOR PANEL "D"			
120/208 VOLTS	3 PHASE	4 WIRE	
FLUSH MTS	MAINS	NO MLO	
NOTES: PROVIDE 4 SHAPE 1/2" C STRADDLED INTO CEILING CAVITY			
LOAD	CCT BKR	BKR CCT	LOAD
1	20/1	2	1/2 BACT
3	8	4	4
5	8	6	4
7	8	8	4
9	8	10	4
11	8	12	4
13	8	14	4
15	8	16	4
17	8	18	4
19	8	20	4
21	8	22	4
23	8	24	4
25	8	26	4
27	8	28	4
29	8	30	4
31	8	32	4
32	8	32	4
33	8	32	4
34	8	32	4
35	8	32	4
36	8	32	4
37	8	32	4
38	8	32	4
39	8	32	4
40	8	32	4
41	8	32	4
42	8	32	4
43	8	32	4
44	8	32	4
45	8	32	4
46	8	32	4
47	8	32	4
48	8	32	4
49	8	32	4
50	8	32	4
51	8	32	4
52	8	32	4
53	8	32	4
54	8	32	4
55	8	32	4
56	8	32	4
57	8	32	4
58	8	32	4
59	8	32	4
60	8	32	4
61	8	32	4
62	8	32	4
63	8	32	4
64	8	32	4
65	8	32	4
66	8	32	4
67	8	32	4
68	8	32	4
69	8	32	4
70	8	32	4
71	8	32	4
72	8	32	4
73	8	32	4
74	8	32	4
75	8	32	4
76	8	32	4
77	8	32	4
78	8	32	4
79	8	32	4
80	8	32	4
81	8	32	4
82	8	32	4
83	8	32	4
84	8	32	4
85	8	32	4
86	8	32	4
87	8	32	4
88	8	32	4
89	8	32	4
90	8	32	4
91	8	32	4
92	8	32	4
93	8	32	4
94	8	32	4
95	8	32	4
96	8	32	4
97	8	32	4
98	8	32	4
99	8	32	4
100	8	32	4



PARTIAL ARCADE PLAN (SOUTH END)  
SCALE: 1/8" = 1'-0"

PARTIAL POWER & SIGNAL PLAN  
SCALE: 1/8" = 1'-0"

FAN ROOM PLAN  
SCALE: 1/8" = 1'-0"

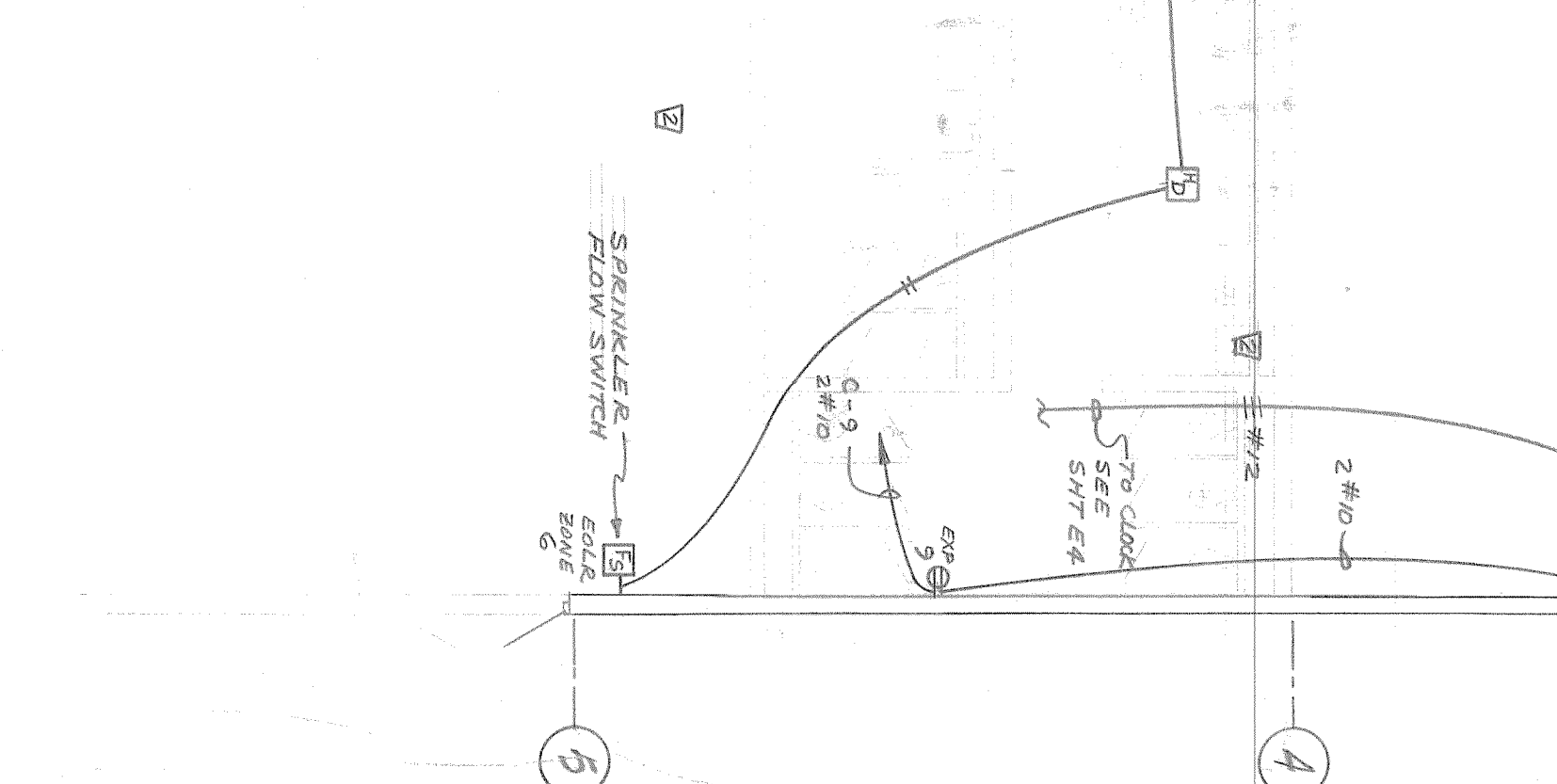
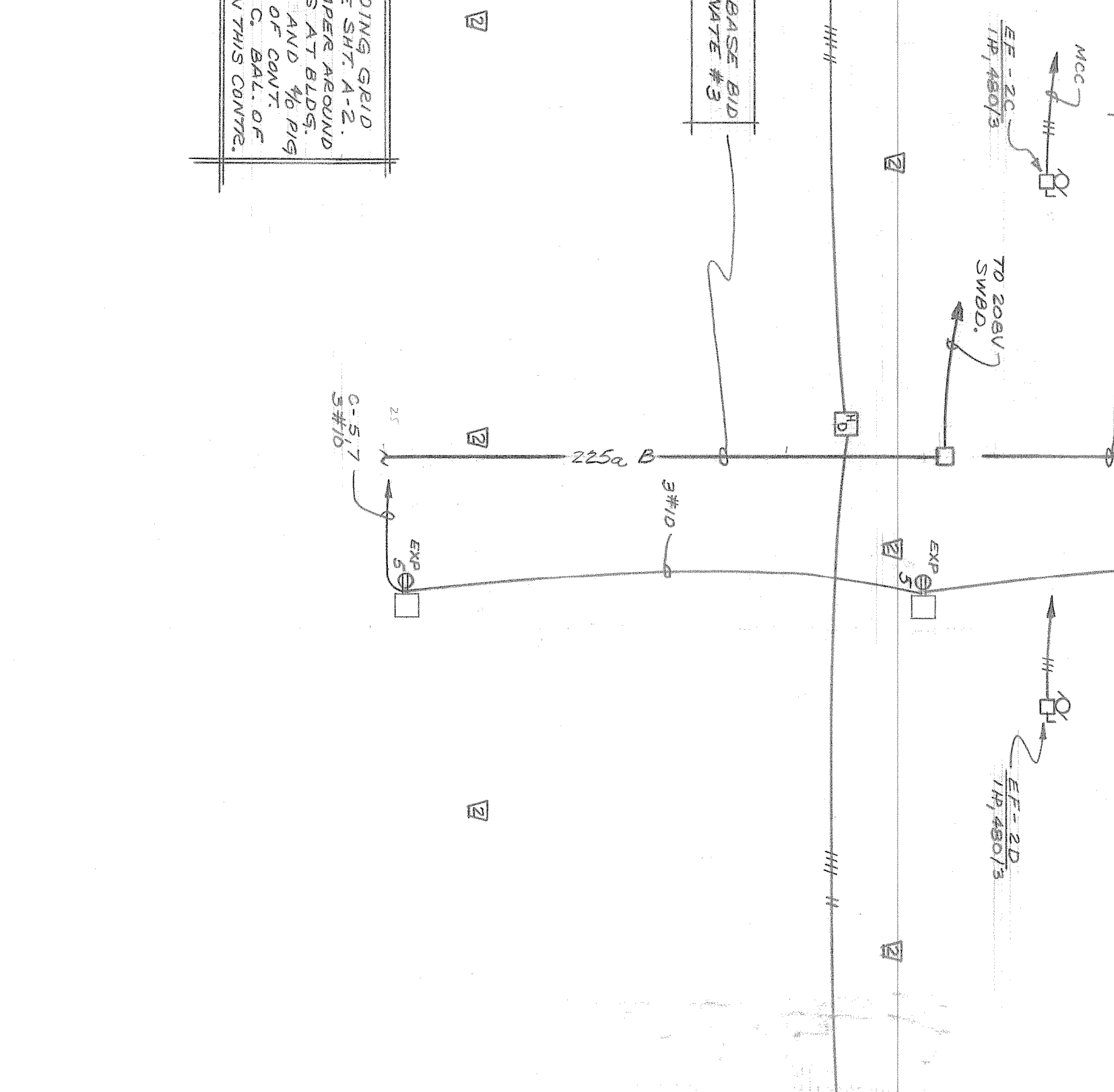
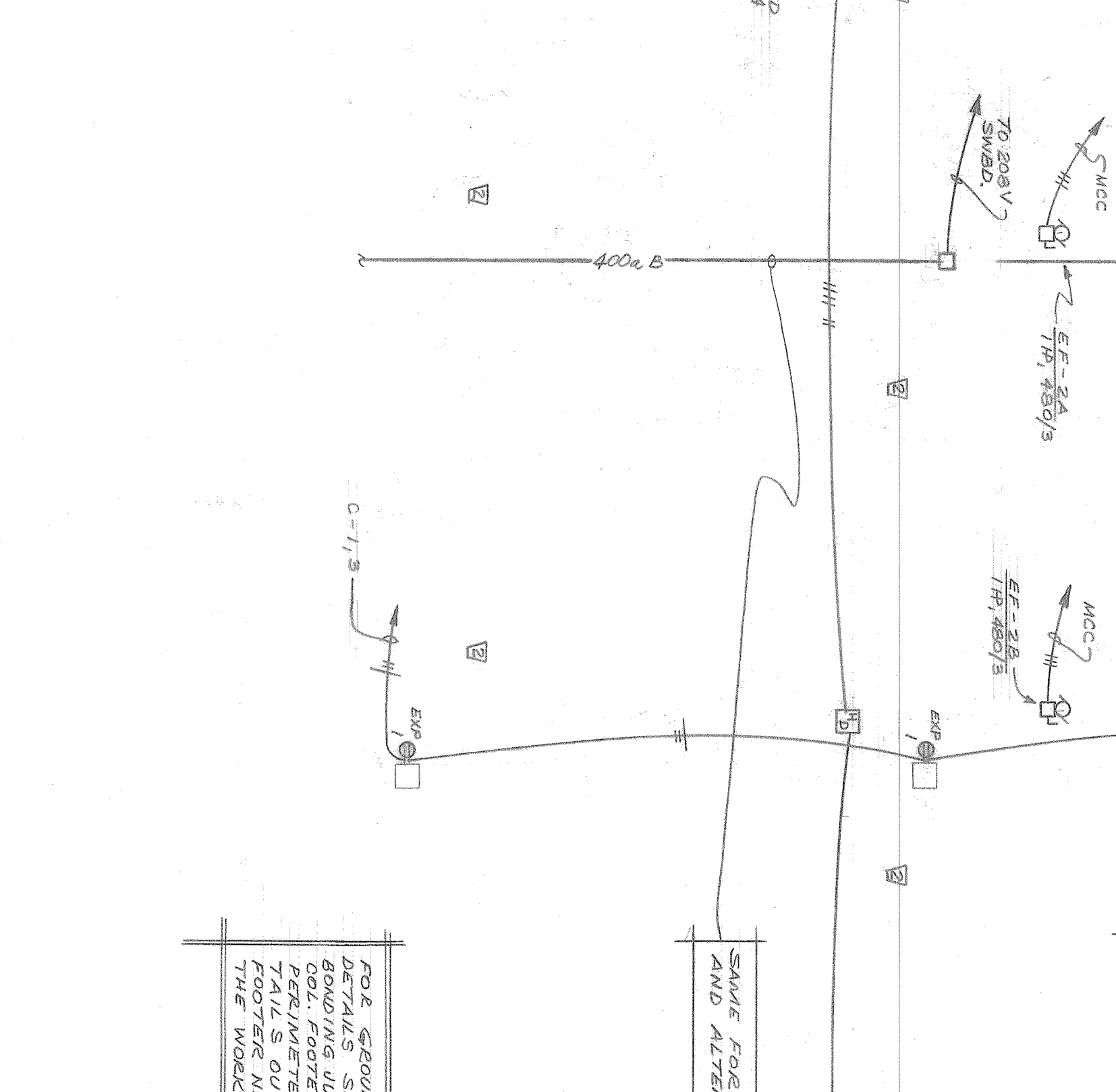
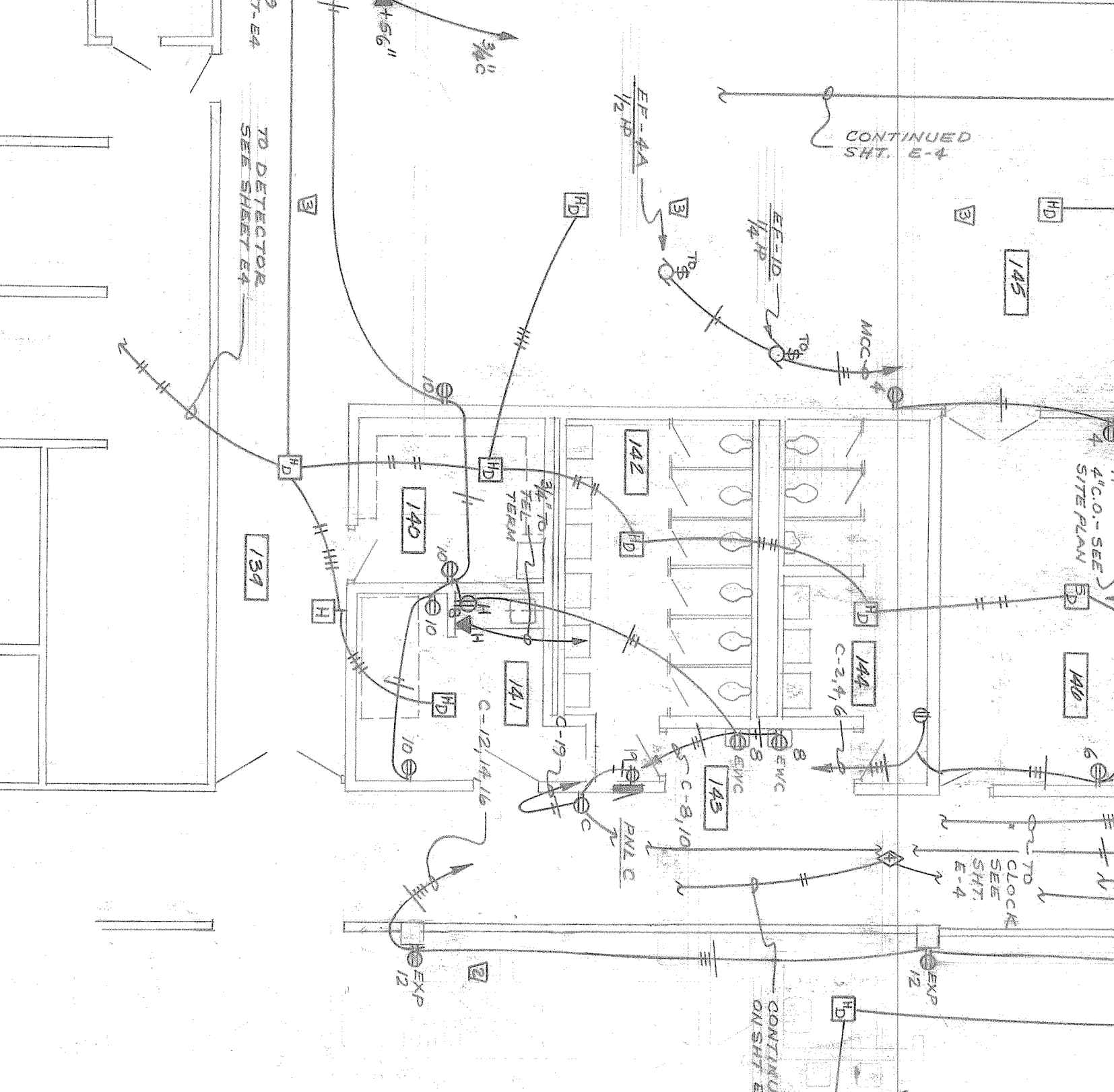
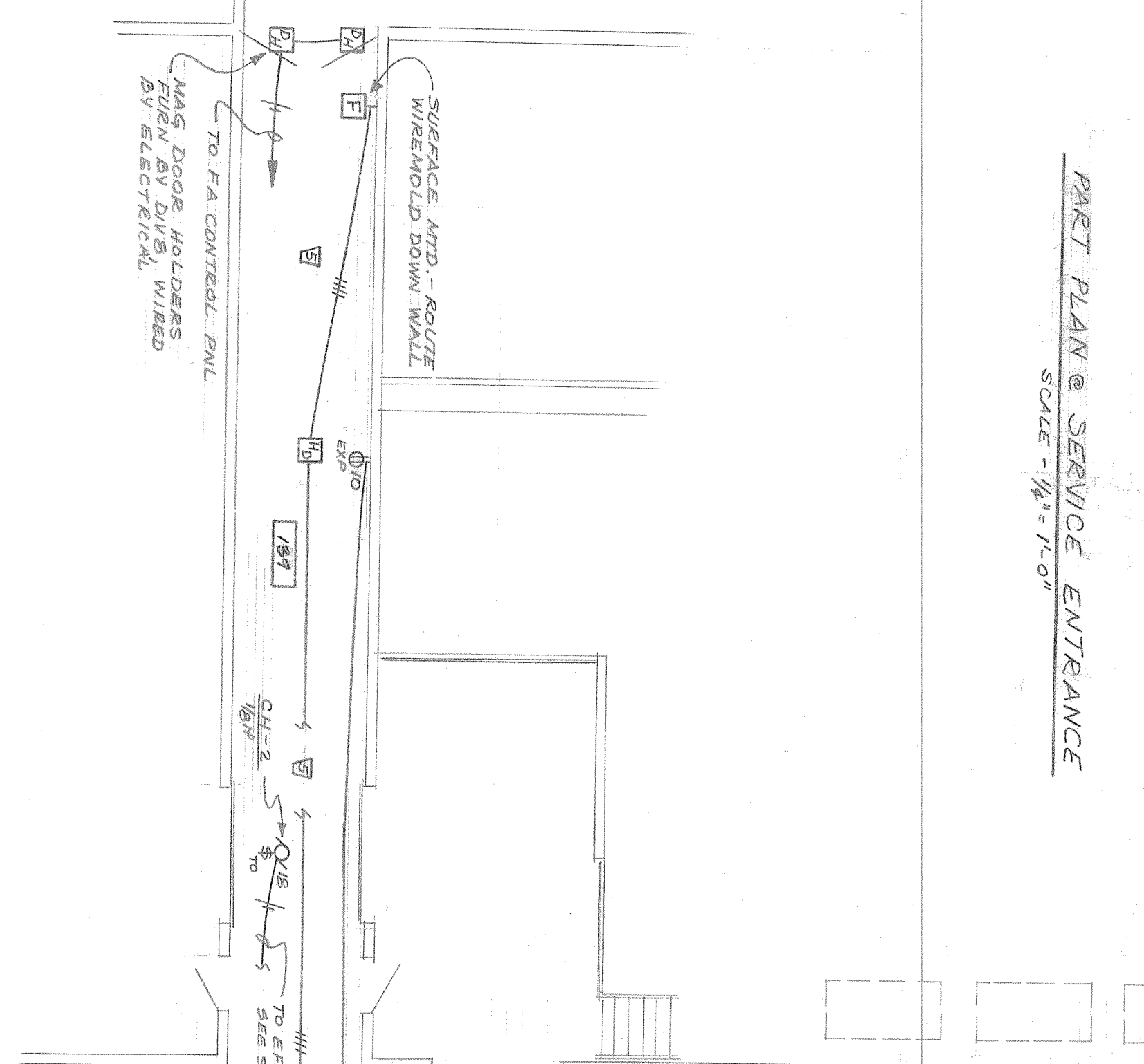
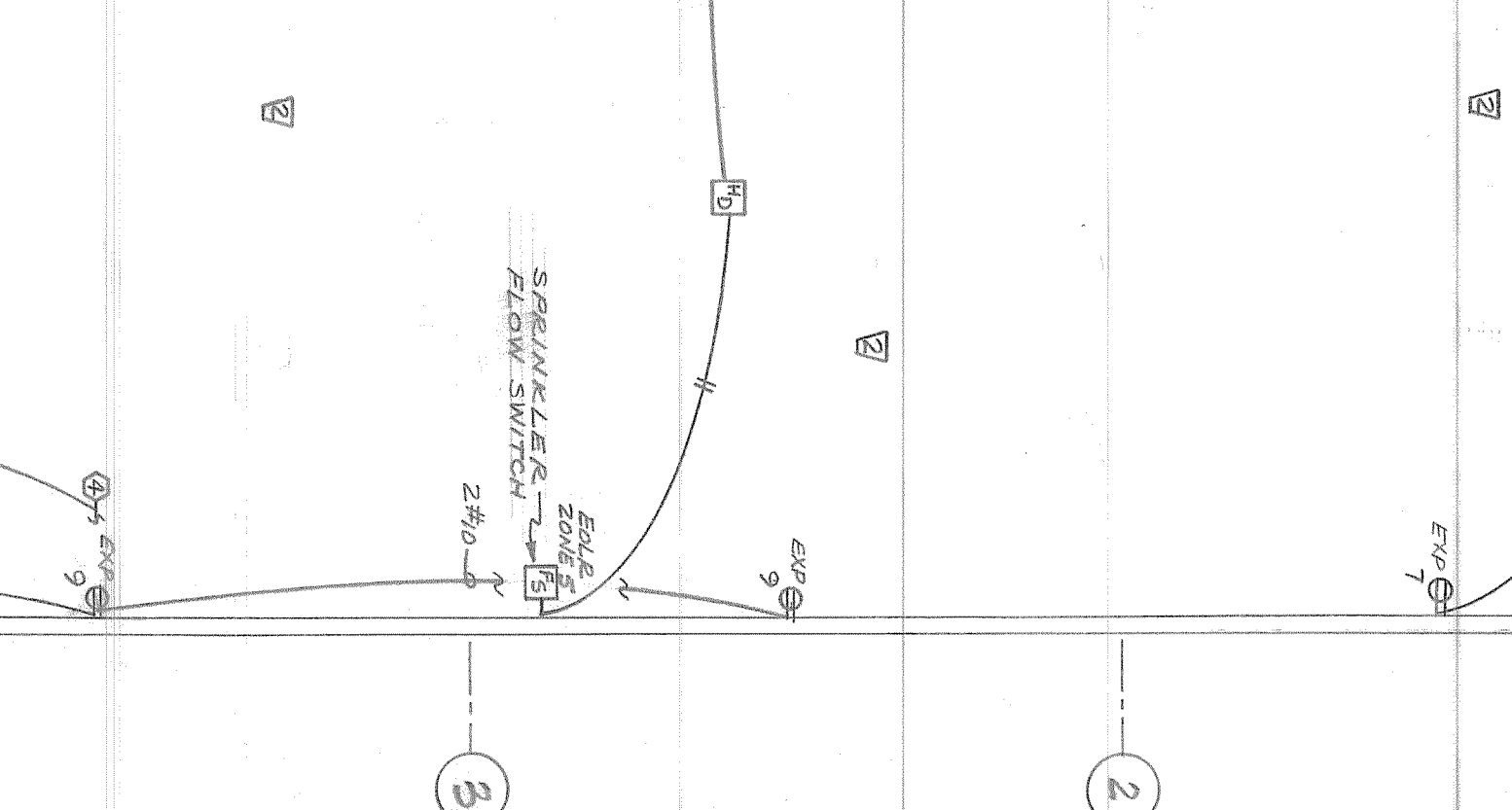
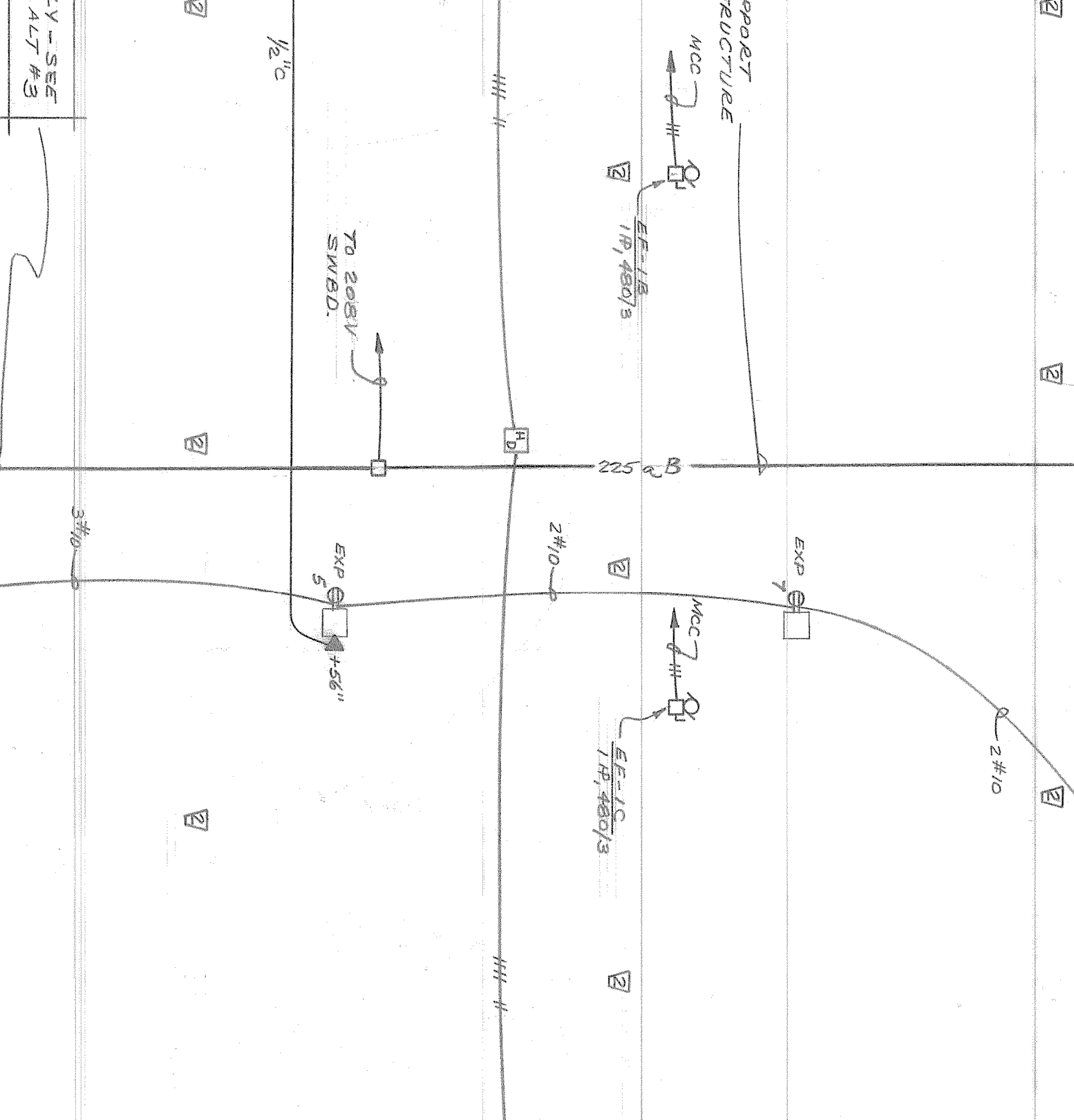
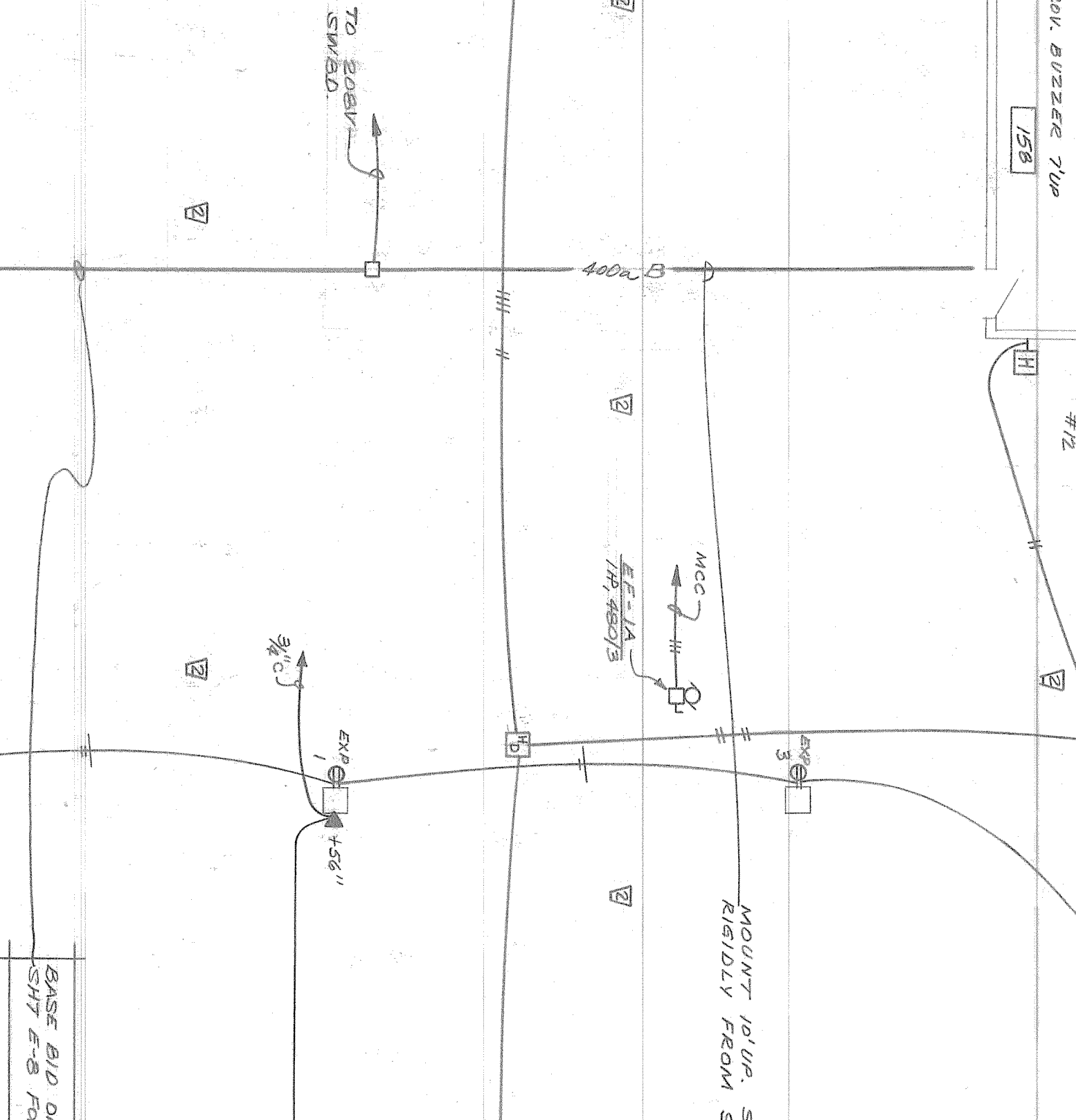
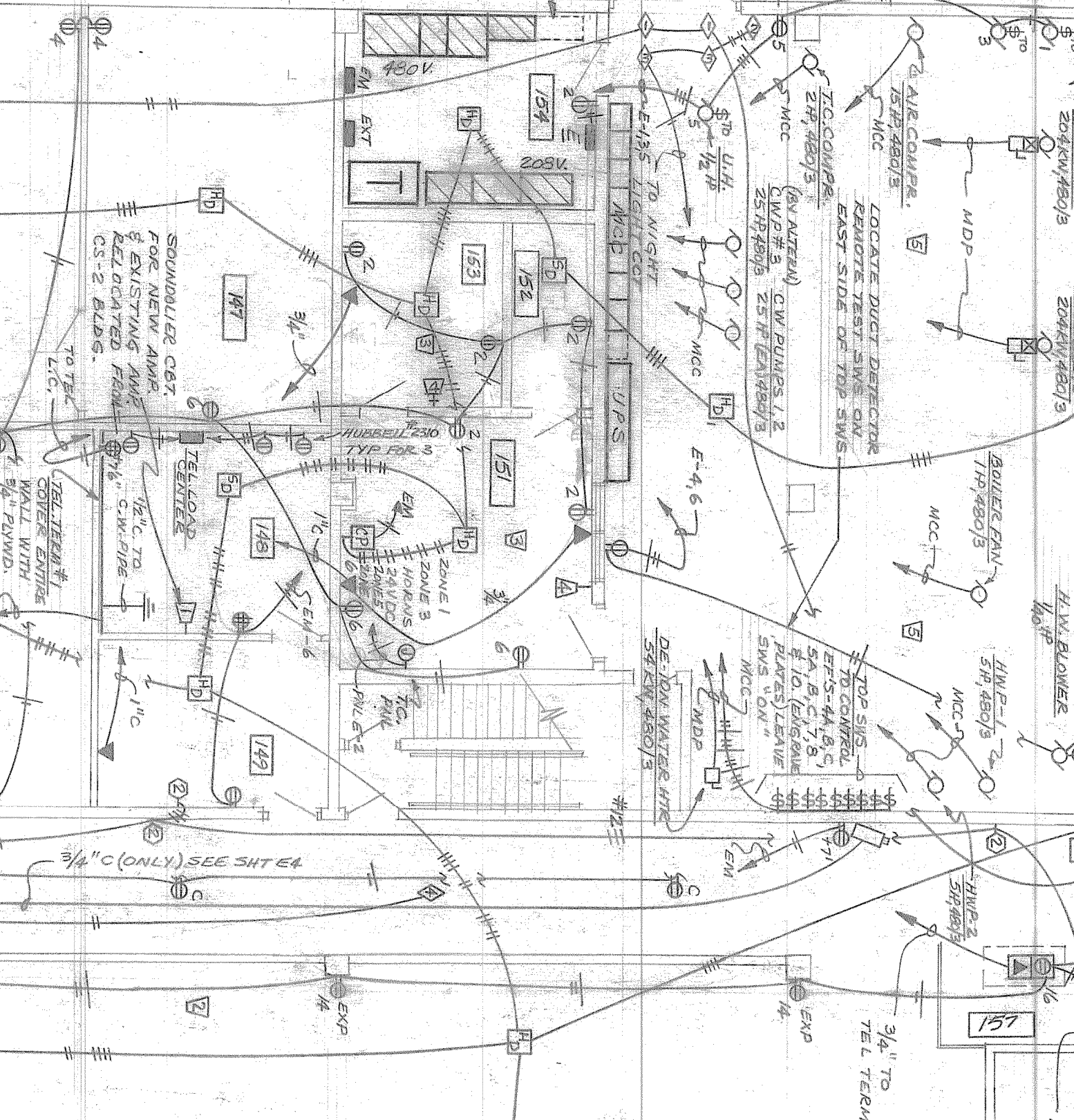
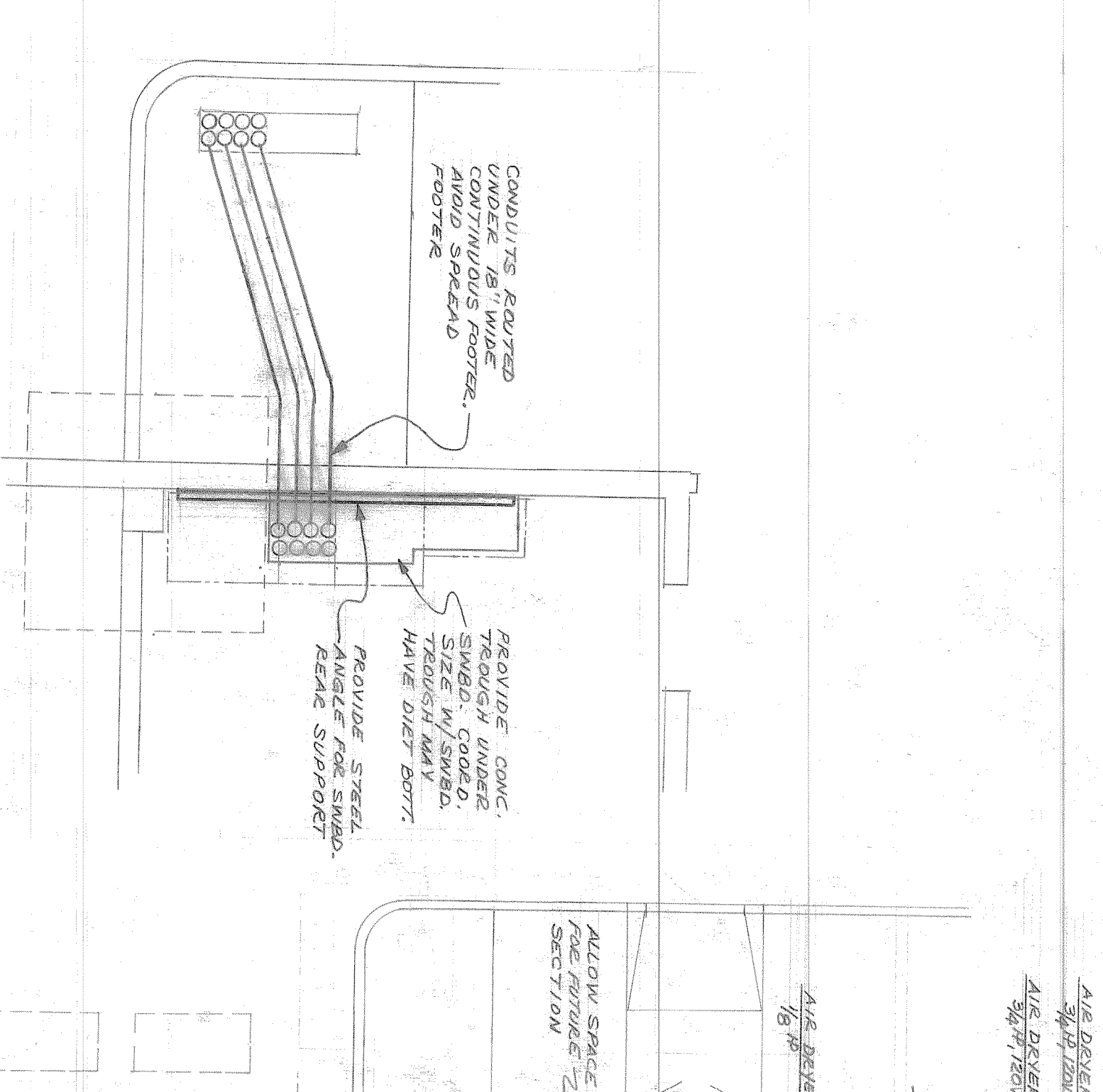
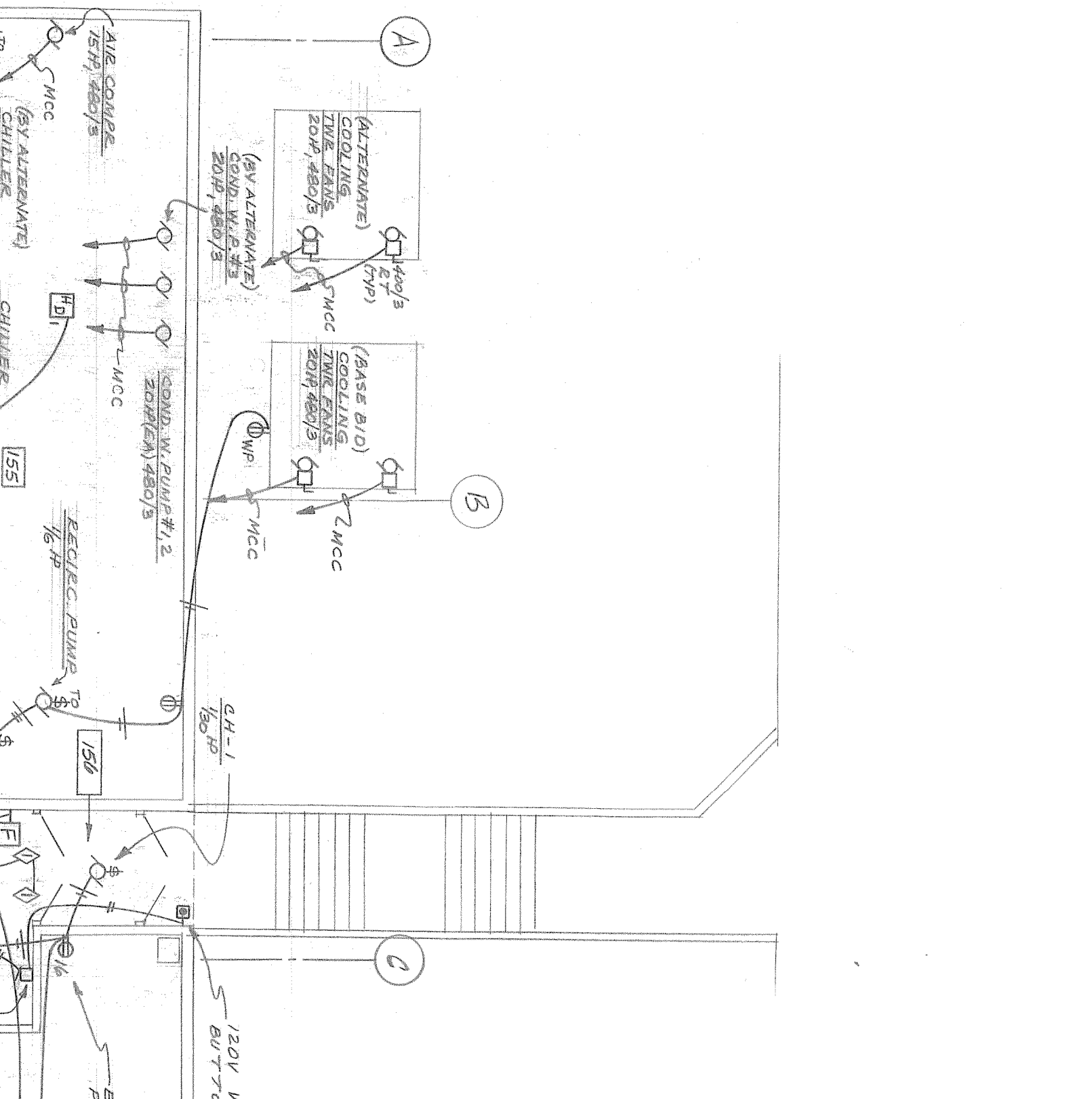
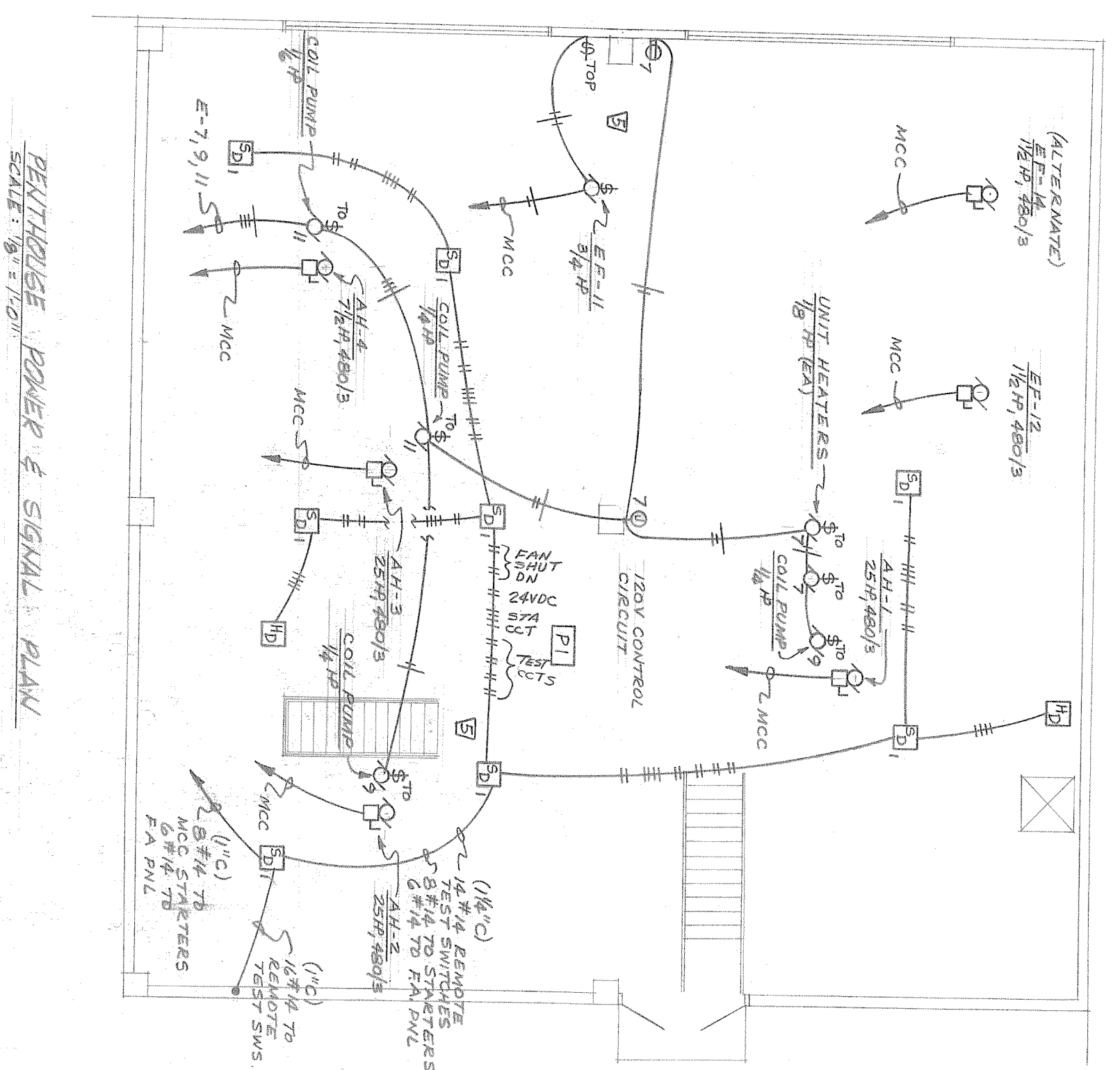
**john james wallace & associates architects a.i.a.**  
 102 north cascade avenue, 300 colorado springs, colorado 80903  
 telephone 303-632-2623

**TRW CS-3**  
 3650 north nevada avenue colorado springs, colorado 80907

drawing title: POWER & SIGNAL PLAN - EAST HALF  
 drawn: W.G.L.  
 checked: G.V.L.  
 issued: 01/18  
 revised:

jfwa 7904  
 drawing of 8

e-4



**SCHEDULE FOR PANEL "E"**  
 120/208 VOLTS 3 PHASE 4 WIRE  
 FUSE/BOB MTS MAINS 100A MLO

LOAD	CCT	BKR	β	BKR	CCT	LOAD
1	20/1	A	20/1	2	15.0	15.0
2	20/1	B	20/1	3	15.0	15.0
3	20/1	C	20/1	4	15.0	15.0
4	20/1	A	20/1	5	15.0	15.0
5	20/1	B	20/1	6	15.0	15.0
6	20/1	C	20/1	7	15.0	15.0
7	20/1	A	20/1	8	15.0	15.0
8	20/1	B	20/1	9	15.0	15.0
9	20/1	C	20/1	10	15.0	15.0
10	20/1	A	20/1	11	15.0	15.0
11	20/1	B	20/1	12	15.0	15.0
12	20/1	C	20/1	13	15.0	15.0
13	20/1	A	20/1	14	15.0	15.0
14	20/1	B	20/1	15	15.0	15.0
15	20/1	C	20/1	16	15.0	15.0
16	20/1	A	20/1	17	15.0	15.0
17	20/1	B	20/1	18	15.0	15.0
18	20/1	C	20/1	19	15.0	15.0
19	20/1	A	20/1			

**SCHEDULE FOR PANEL "C"**  
 120/208 VOLTS 3 PHASE 4 WIRE  
 FUSE/BOB MTS MAINS 100A MLO

LOAD	CCT	BKR	β	BKR	CCT	LOAD
1	20/1	A	20/1	2	15.0	15.0
2	20/1	B	20/1	3	15.0	15.0
3	20/1	C	20/1	4	15.0	15.0
4	20/1	A	20/1	5	15.0	15.0
5	20/1	B	20/1	6	15.0	15.0
6	20/1	C	20/1	7	15.0	15.0
7	20/1	A	20/1	8	15.0	15.0
8	20/1	B	20/1	9	15.0	15.0
9	20/1	C	20/1	10	15.0	15.0
10	20/1	A	20/1	11	15.0	15.0
11	20/1	B	20/1	12	15.0	15.0
12	20/1	C	20/1	13	15.0	15.0
13	20/1	A	20/1	14	15.0	15.0
14	20/1	B	20/1	15	15.0	15.0
15	20/1	C	20/1	16	15.0	15.0
16	20/1	A	20/1	17	15.0	15.0
17	20/1	B	20/1	18	15.0	15.0
18	20/1	C	20/1	19	15.0	15.0
19	20/1	A	20/1			

FOR GROUNDING FIELD  
 BONDING NUMBER AROUND  
 ALL ROOSTERS AT BLDG  
 TALKS OUT OF CONT OF  
 THE WORK IN THIS CONTS

PARTIAL POWER & SIGNAL PLAN  
 SCALE 1/8" = 1'-0"

LOAD	CCT	BKR	β	BKR	CCT	LOAD
1	20/1	A	20/1	2	20/1	2000
2	20/1	A	20/1	2	20/1	2000
3	20/1	A	20/1	2	20/1	2000
4	20/1	A	20/1	2	20/1	2000
5	20/1	A	20/1	2	20/1	2000
6	20/1	A	20/1	2	20/1	2000
7	20/1	A	20/1	2	20/1	2000
8	20/1	A	20/1	2	20/1	2000
9	20/1	A	20/1	2	20/1	2000
10	20/1	A	20/1	2	20/1	2000

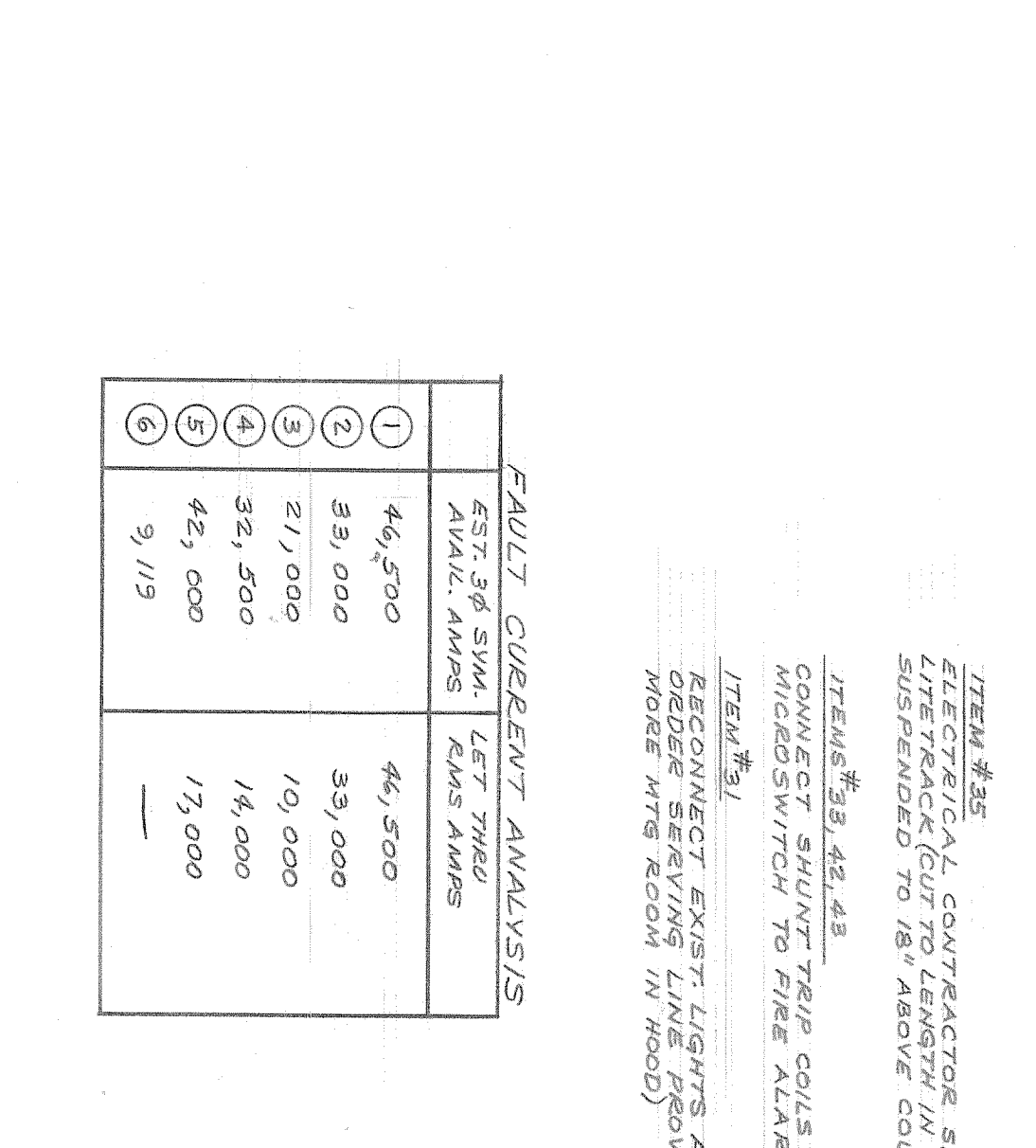
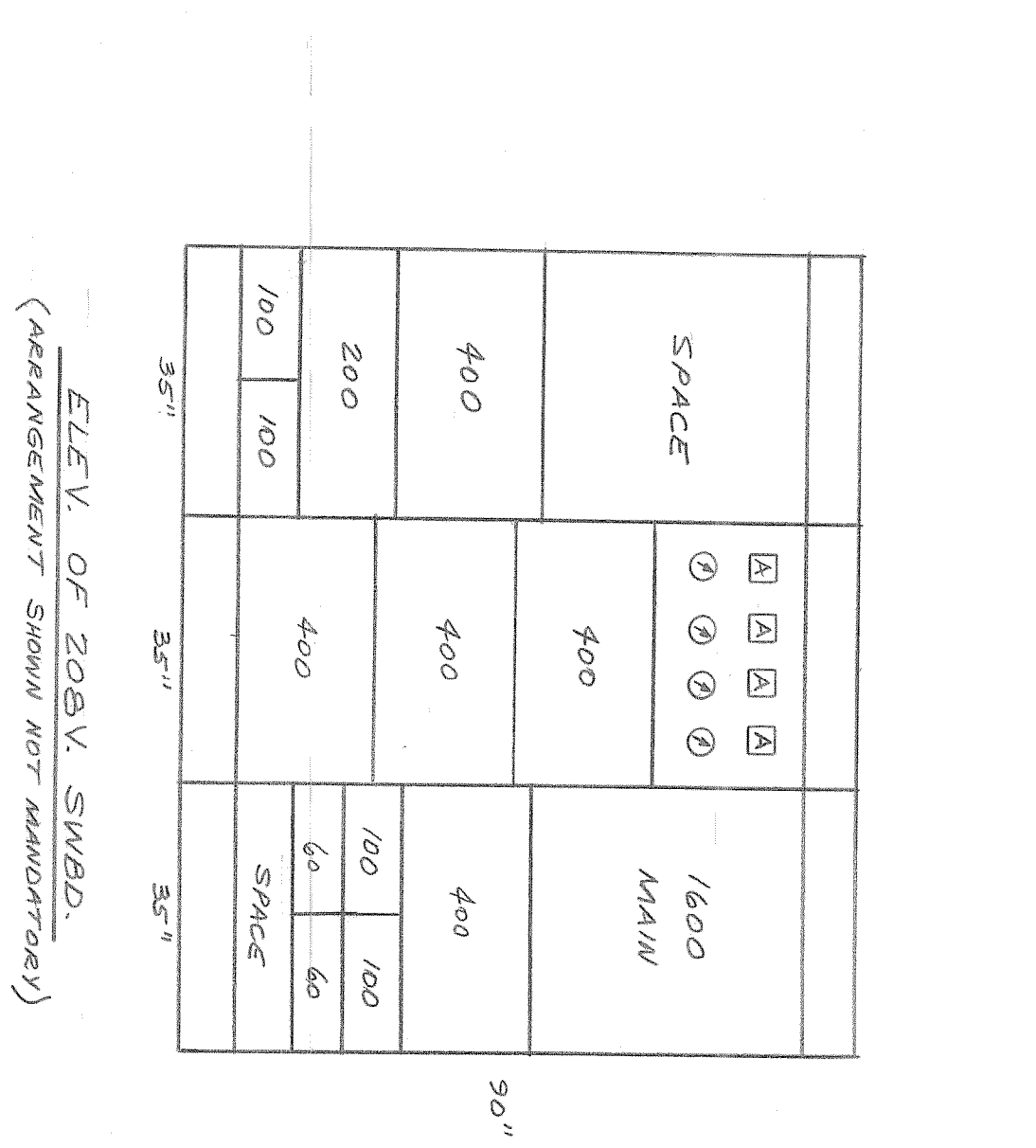
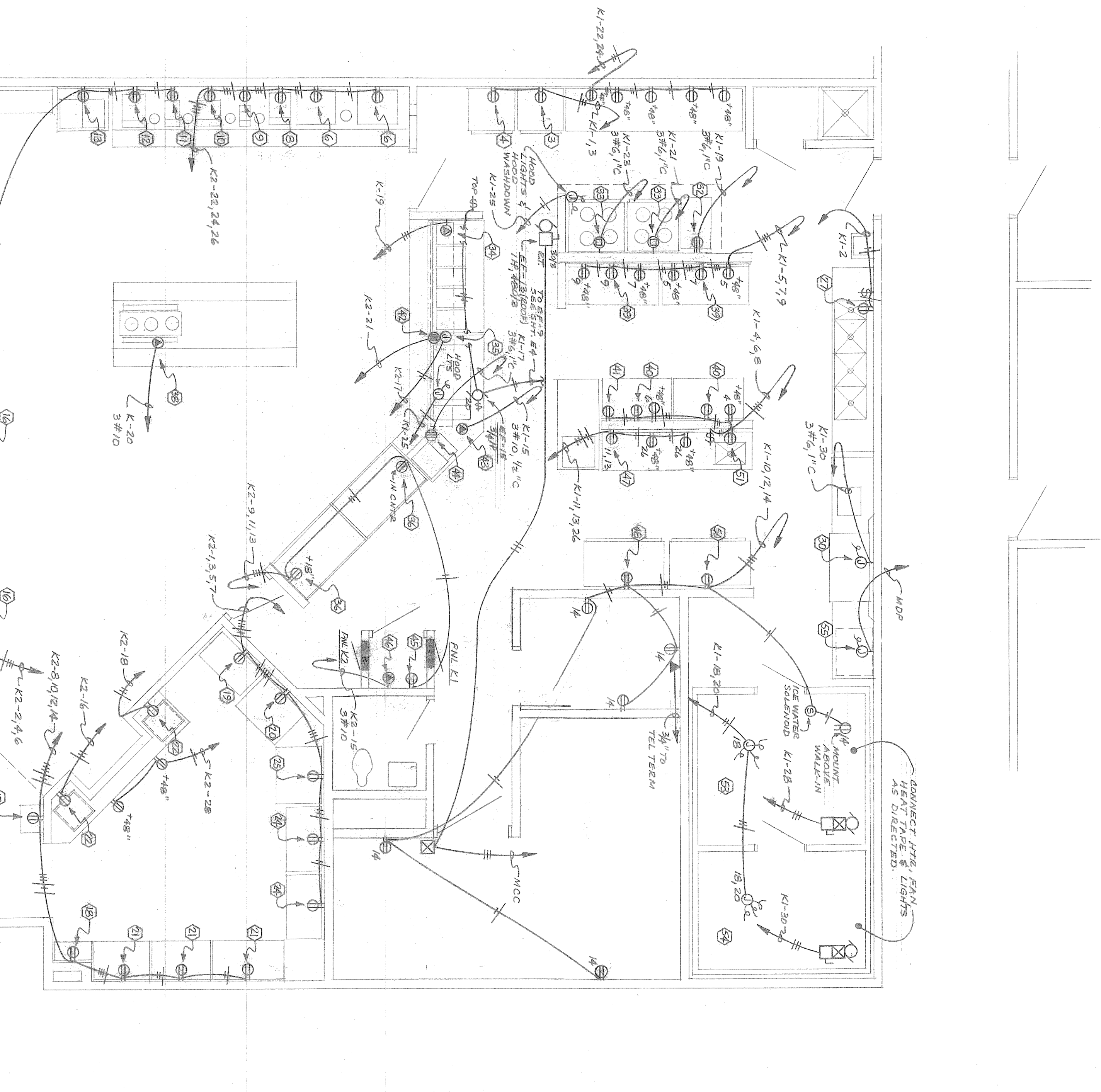
LOAD	CCT	BKR	β	BKR	CCT	LOAD
1	20/1	A	20/1	2	20/1	2000
2	20/1	A	20/1	2	20/1	2000
3	20/1	A	20/1	2	20/1	2000
4	20/1	A	20/1	2	20/1	2000
5	20/1	A	20/1	2	20/1	2000
6	20/1	A	20/1	2	20/1	2000
7	20/1	A	20/1	2	20/1	2000
8	20/1	A	20/1	2	20/1	2000
9	20/1	A	20/1	2	20/1	2000
10	20/1	A	20/1	2	20/1	2000

LOAD	CCT	BKR	β	BKR	CCT	LOAD
1	20/1	A	20/1	2	20/1	2000
2	20/1	A	20/1	2	20/1	2000
3	20/1	A	20/1	2	20/1	2000
4	20/1	A	20/1	2	20/1	2000
5	20/1	A	20/1	2	20/1	2000
6	20/1	A	20/1	2	20/1	2000
7	20/1	A	20/1	2	20/1	2000
8	20/1	A	20/1	2	20/1	2000
9	20/1	A	20/1	2	20/1	2000
10	20/1	A	20/1	2	20/1	2000

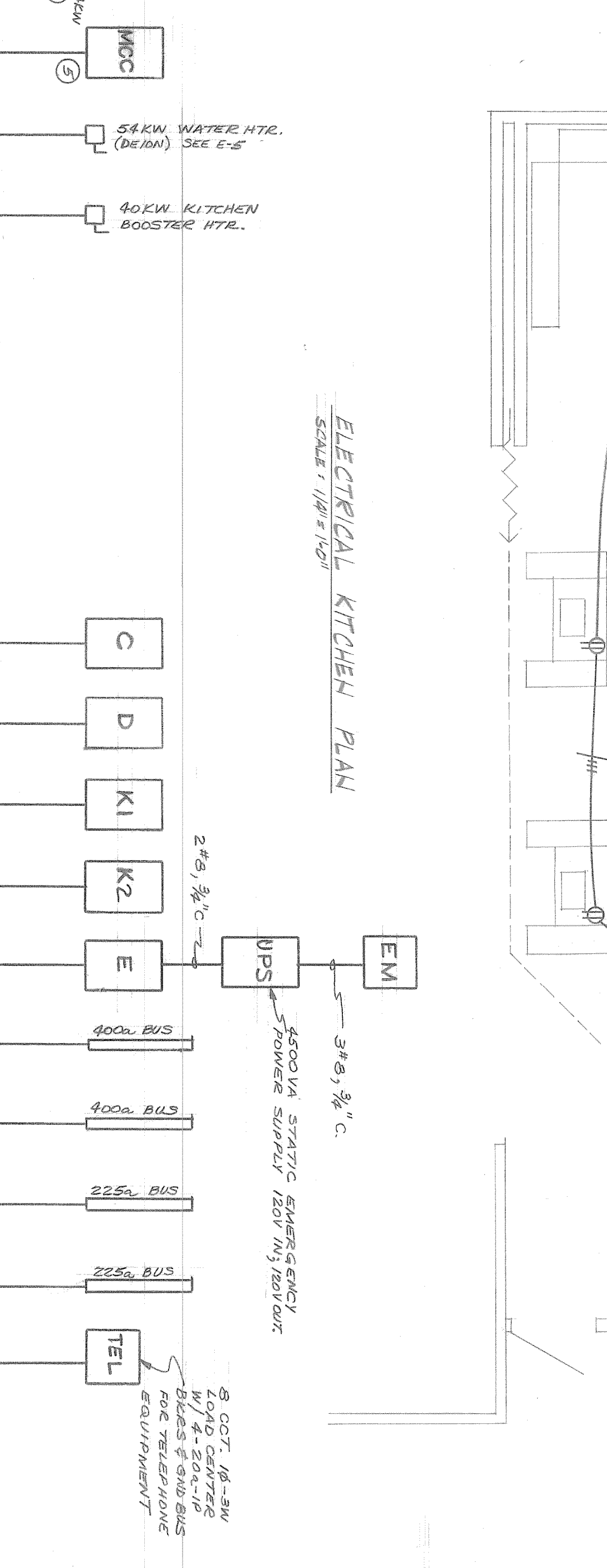
LOAD	CCT	BKR	β	BKR	CCT	LOAD
1	20/1	A	20/1	2	20/1	2000
2	20/1	A	20/1	2	20/1	2000
3	20/1	A	20/1	2	20/1	2000
4	20/1	A	20/1	2	20/1	2000
5	20/1	A	20/1	2	20/1	2000
6	20/1	A	20/1	2	20/1	2000
7	20/1	A	20/1	2	20/1	2000
8	20/1	A	20/1	2	20/1	2000
9	20/1	A	20/1	2	20/1	2000
10	20/1	A	20/1	2	20/1	2000

ROOM	MARK	EQUIPMENT	HP	VOLTS	BRANCH	FEEDER	REMARKS
KITCHEN	1	REFRIGERATOR	1/2	120	K-1	20/1	PROVIDE SILENT REFRIGERATOR @ 1/2 HP
KITCHEN	2	ICE DISPENSER (2 BANK)	1/2	120	K-1	20/1	PROVIDE SILENT REFRIGERATOR @ 1/2 HP
KITCHEN	3	ICE DISPENSER	1/2	120	K-1	20/1	PROVIDE SILENT REFRIGERATOR @ 1/2 HP
KITCHEN	4	WATER DISPENSER	1/2	120	K-1	20/1	PROVIDE SILENT REFRIGERATOR @ 1/2 HP
KITCHEN	5	WATER DISPENSER	1/2	120	K-1	20/1	PROVIDE SILENT REFRIGERATOR @ 1/2 HP
KITCHEN	6	WATER DISPENSER	1/2	120	K-1	20/1	PROVIDE SILENT REFRIGERATOR @ 1/2 HP
KITCHEN	7	WATER DISPENSER	1/2	120	K-1	20/1	PROVIDE SILENT REFRIGERATOR @ 1/2 HP
KITCHEN	8	WATER DISPENSER	1/2	120	K-1	20/1	PROVIDE SILENT REFRIGERATOR @ 1/2 HP
KITCHEN	9	WATER DISPENSER	1/2	120	K-1	20/1	PROVIDE SILENT REFRIGERATOR @ 1/2 HP
KITCHEN	10	WATER DISPENSER	1/2	120	K-1	20/1	PROVIDE SILENT REFRIGERATOR @ 1/2 HP

ROOM	MARK	EQUIPMENT	HP	VOLTS	BRANCH	FEEDER	REMARKS
KITCHEN	11	WATER DISPENSER	1/2	120	K-1	20/1	PROVIDE SILENT REFRIGERATOR @ 1/2 HP
KITCHEN	12	WATER DISPENSER	1/2	120	K-1	20/1	PROVIDE SILENT REFRIGERATOR @ 1/2 HP
KITCHEN	13	WATER DISPENSER	1/2	120	K-1	20/1	PROVIDE SILENT REFRIGERATOR @ 1/2 HP
KITCHEN	14	WATER DISPENSER	1/2	120	K-1	20/1	PROVIDE SILENT REFRIGERATOR @ 1/2 HP
KITCHEN	15	WATER DISPENSER	1/2	120	K-1	20/1	PROVIDE SILENT REFRIGERATOR @ 1/2 HP
KITCHEN	16	WATER DISPENSER	1/2	120	K-1	20/1	PROVIDE SILENT REFRIGERATOR @ 1/2 HP
KITCHEN	17	WATER DISPENSER	1/2	120	K-1	20/1	PROVIDE SILENT REFRIGERATOR @ 1/2 HP
KITCHEN	18	WATER DISPENSER	1/2	120	K-1	20/1	PROVIDE SILENT REFRIGERATOR @ 1/2 HP
KITCHEN	19	WATER DISPENSER	1/2	120	K-1	20/1	PROVIDE SILENT REFRIGERATOR @ 1/2 HP
KITCHEN	20	WATER DISPENSER	1/2	120	K-1	20/1	PROVIDE SILENT REFRIGERATOR @ 1/2 HP



NO.	TYPE	FAULT CURRENT (KA)	LETTING THROUGH (KA)
1	3-PHASE	46,500	39,000
2	LINE-TO-GROUND	83,000	19,000
3	LINE-TO-LINE	21,000	35,500
4	LINE-TO-GROUND	42,000	17,000
5	LINE-TO-LINE	9,119	



**NOTES:**  
1. ALL EQUIPMENT TO BE LOCATED IN INSTRUMENT CABINETS.  
2. ALL EQUIPMENT TO BE LOCATED IN INSTRUMENT CABINETS.  
3. ALL EQUIPMENT TO BE LOCATED IN INSTRUMENT CABINETS.  
4. ALL EQUIPMENT TO BE LOCATED IN INSTRUMENT CABINETS.

**CONTRACTOR SHALL:**  
1. PROVIDE ALL MATERIALS AND LABOR.  
2. PROVIDE ALL MATERIALS AND LABOR.  
3. PROVIDE ALL MATERIALS AND LABOR.

