

CAMPUS PLAN UPDATE

UNIVERSITY OF COLORADO COLORADO SPRINGS

PRELIMINARY DISCOVERY FINDINGS
STEERING COMMITTEE MEETING
MAY 25, 2022

SMITHGROUP

TODAY'S AGENDA

OPEN FORUMS' AGENDA:

- ① CAMPUS PLAN PROCESS
- ② DISCOVERY FINDINGS
- ③ GUIDING PRINCIPLES
- ④ DISCUSSION

ADDITIONAL ITEMS FOR TODAY:

- ⑤ SUMMARY OF FEEDBACK
- ⑥ HYBL SPORT COURT LOCATION



SMITHGROUP RESEARCH

7 DRIVERS OF CHANGE

CAMPUS FORWARD



DEMOGRAPHICS & CULTURE



TECHNOLOGY



FUNDING



PARTNERSHIP



PEDAGOGY & SCHOLARSHIP



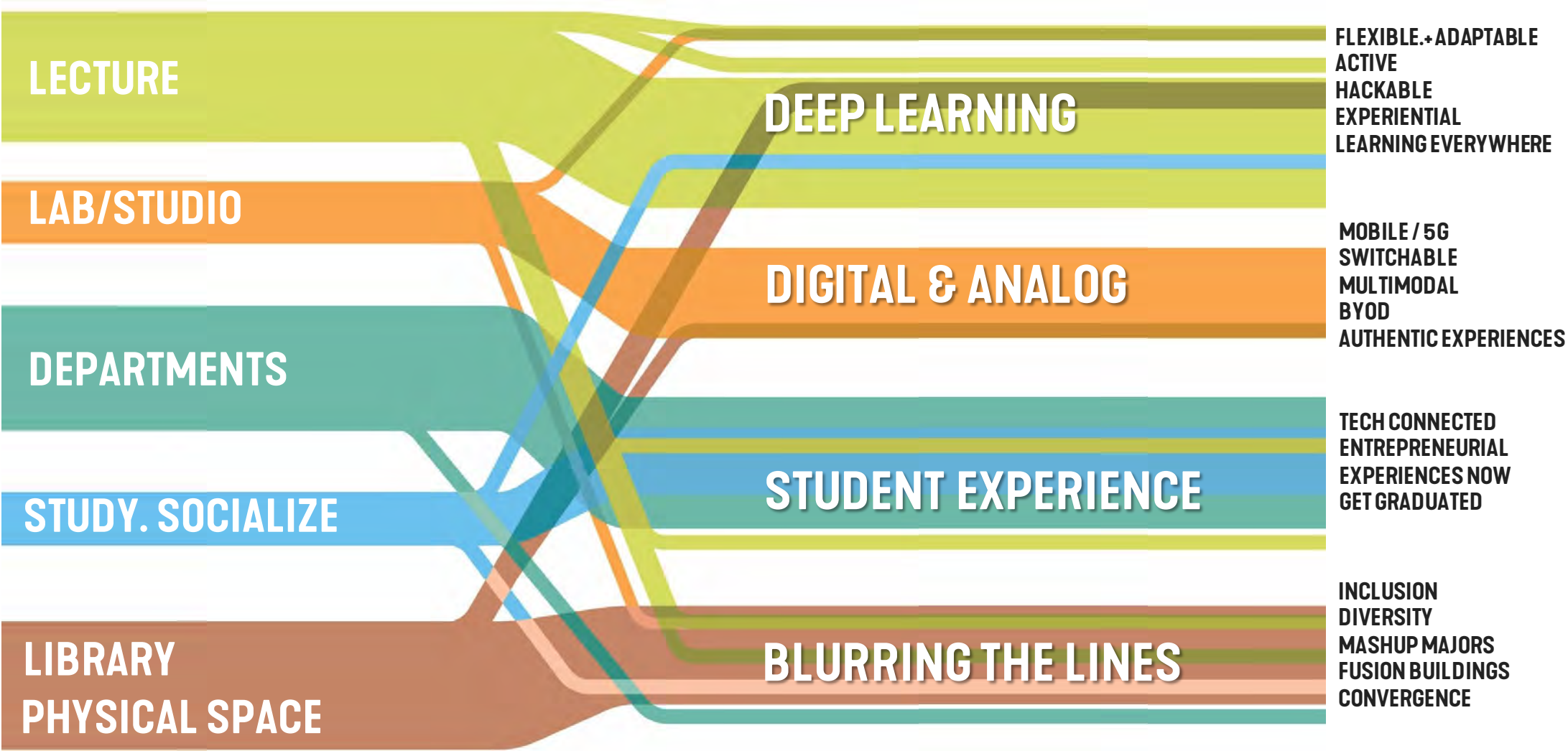
STUDENT EXPERIENCE



RESILIENCY & SUSTAINABILITY

EVERYTHING HAS CHANGED

LEARNING CONTINUUM



SUCCESS 2030

7 CORE STRATEGIES



**FOSTER A COMMUNITY OF LEARNING, ENGAGEMENT,
AND INCLUSIVE BELONGING**



**ENHANCE ENROLLMENT, RETENTION AND GRADUATION
EFFORTS TO DRIVE LONG-TERM STABILITY**



PROMOTE RESEARCH AND CREATIVE EXCELLENCE



STRENGTHEN OUR FINANCIAL POSITION



**INVEST DELIBERATELY IN OUR PEOPLE,
PROCESSES, AND INFRASTRUCTURE**



**SUPPORT DISTINCTIVE PROGRAMS,
BOTH EXISTING AND NEW**



**PURSUE MUTUALLY BENEFICIAL
PARTNERSHIPS AND OUTREACH**



Chancellor Venkat Reddy

PLAN UPDATE GOALS

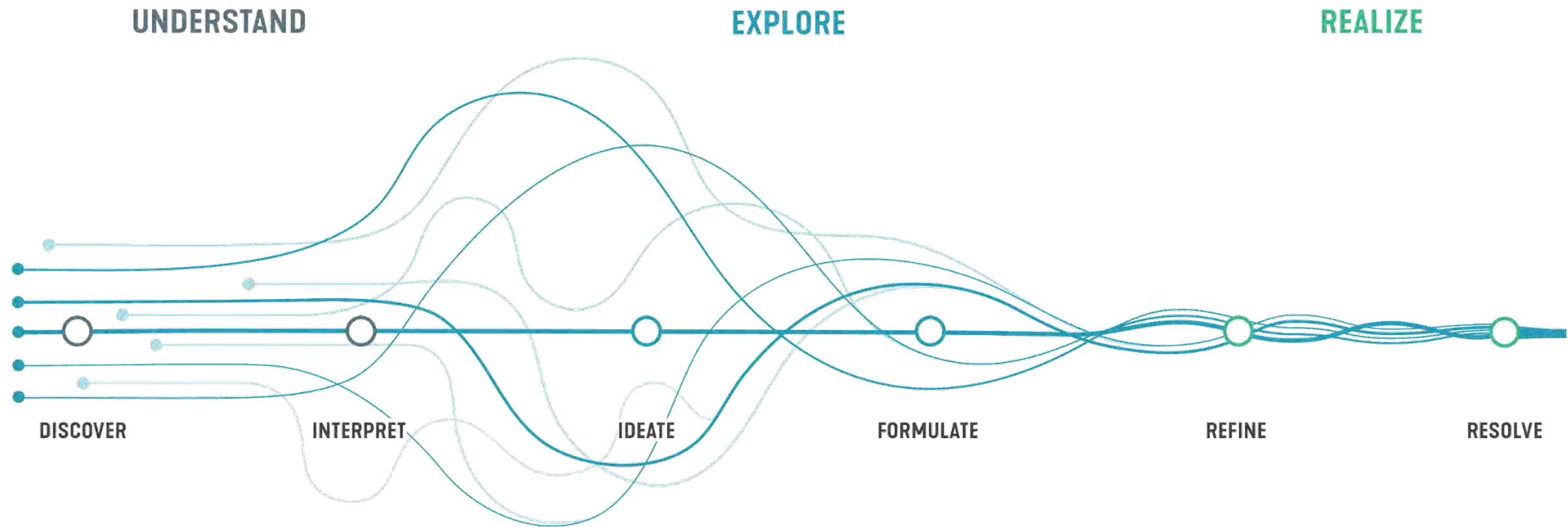
- **Integrate the Success 2030 Strategic Plan**
- **Determine our space needs:**
 - Academics, Support, Student Life
 - Athletic & recreational facilities & fields
 - Operations and maintenance
 - Off campus sites
- **Develop Campus Infrastructure**
 - More placemaking opportunities
 - Stormwater management update
 - Sustainable Systems Thinking
- **Build a due diligence case for financial and community support**
 - Clear implementation plan
 - Supporting case studies



UCCS 2012 Campus Plan

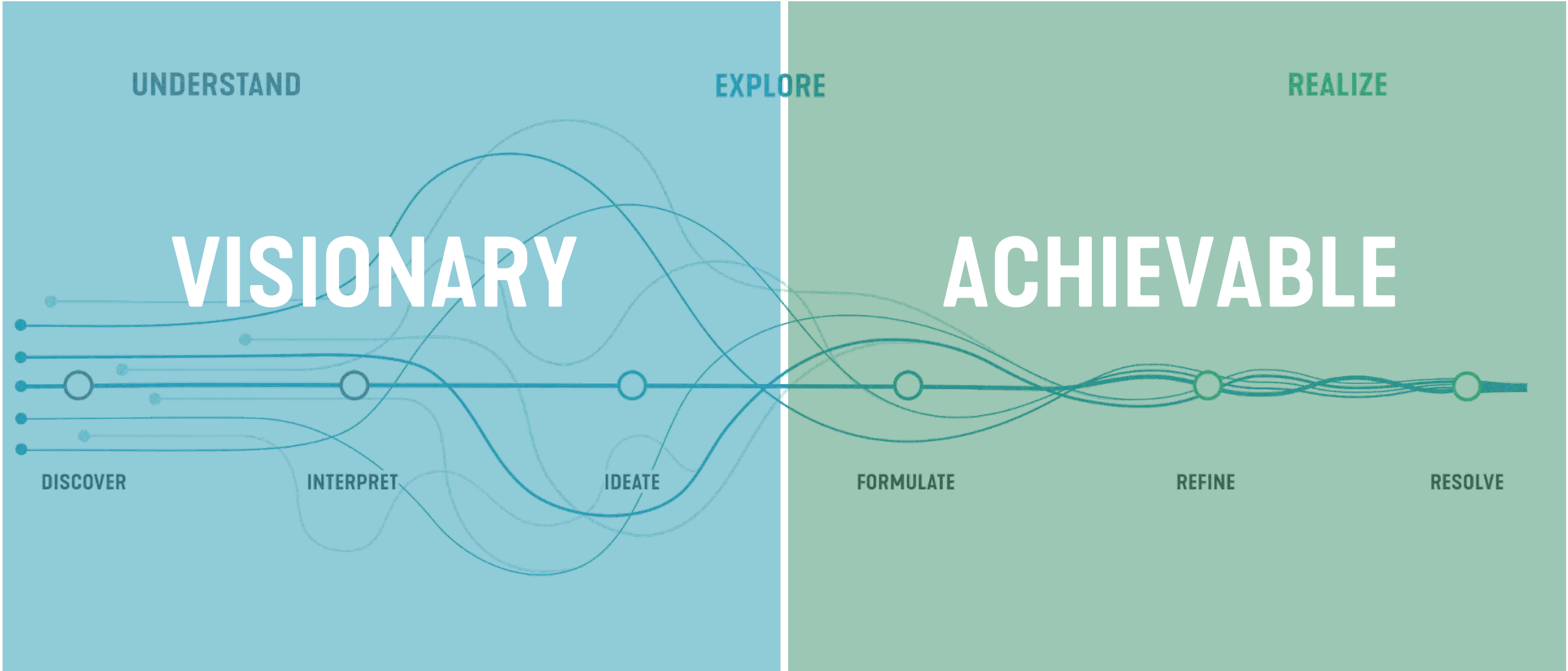
THE ITERATIVE PROCESS

LINKING PURPOSE, PROGRAM & POTENTIAL

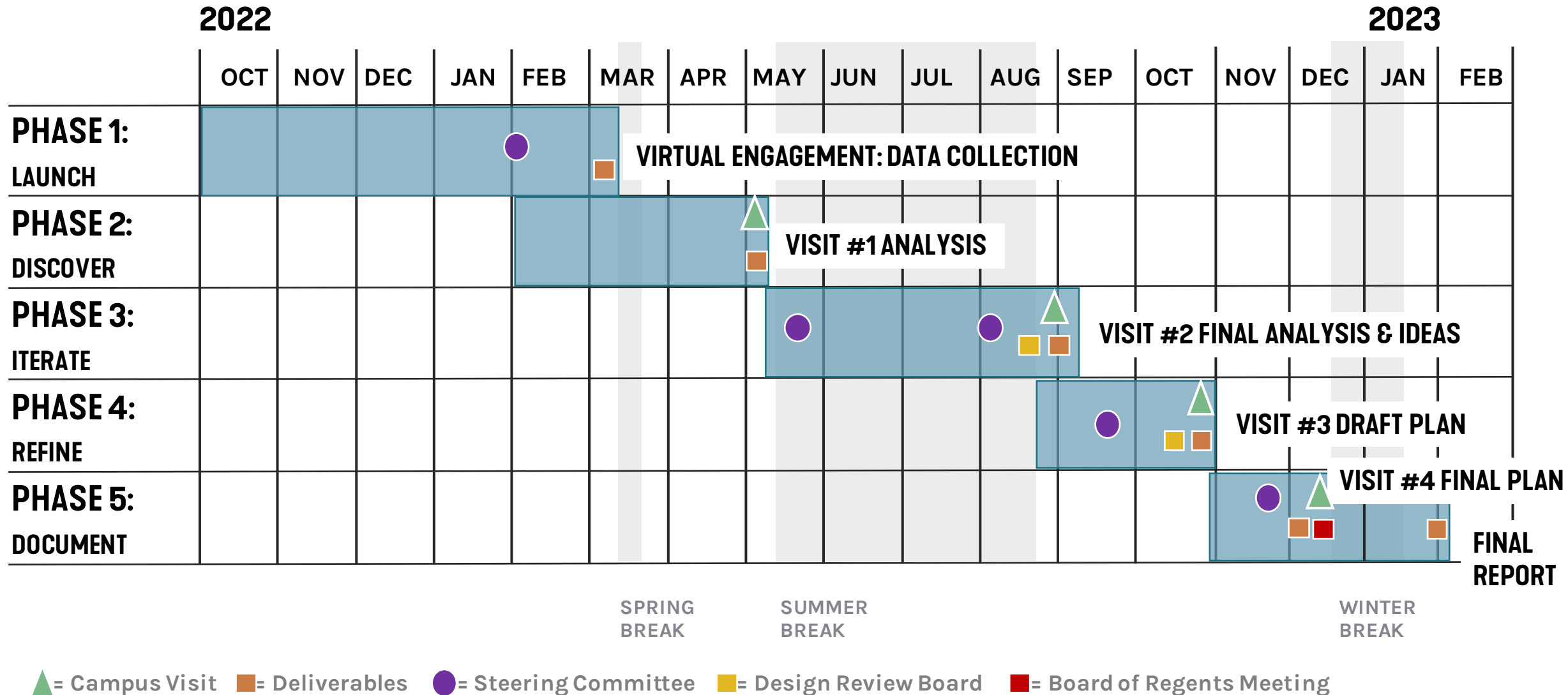


THE ITERATIVE PROCESS

LINKING PURPOSE, PROGRAM & POTENTIAL



CAMPUS PLAN SCHEDULE



VISIT US – TELL US WHAT YOU THINK

APRIL 27 3-5 PM UNIVERSITY CENTER CAFÉ 65
APRIL 28 8-11 AM UNIVERSITY CENTER COFFEE SHOP



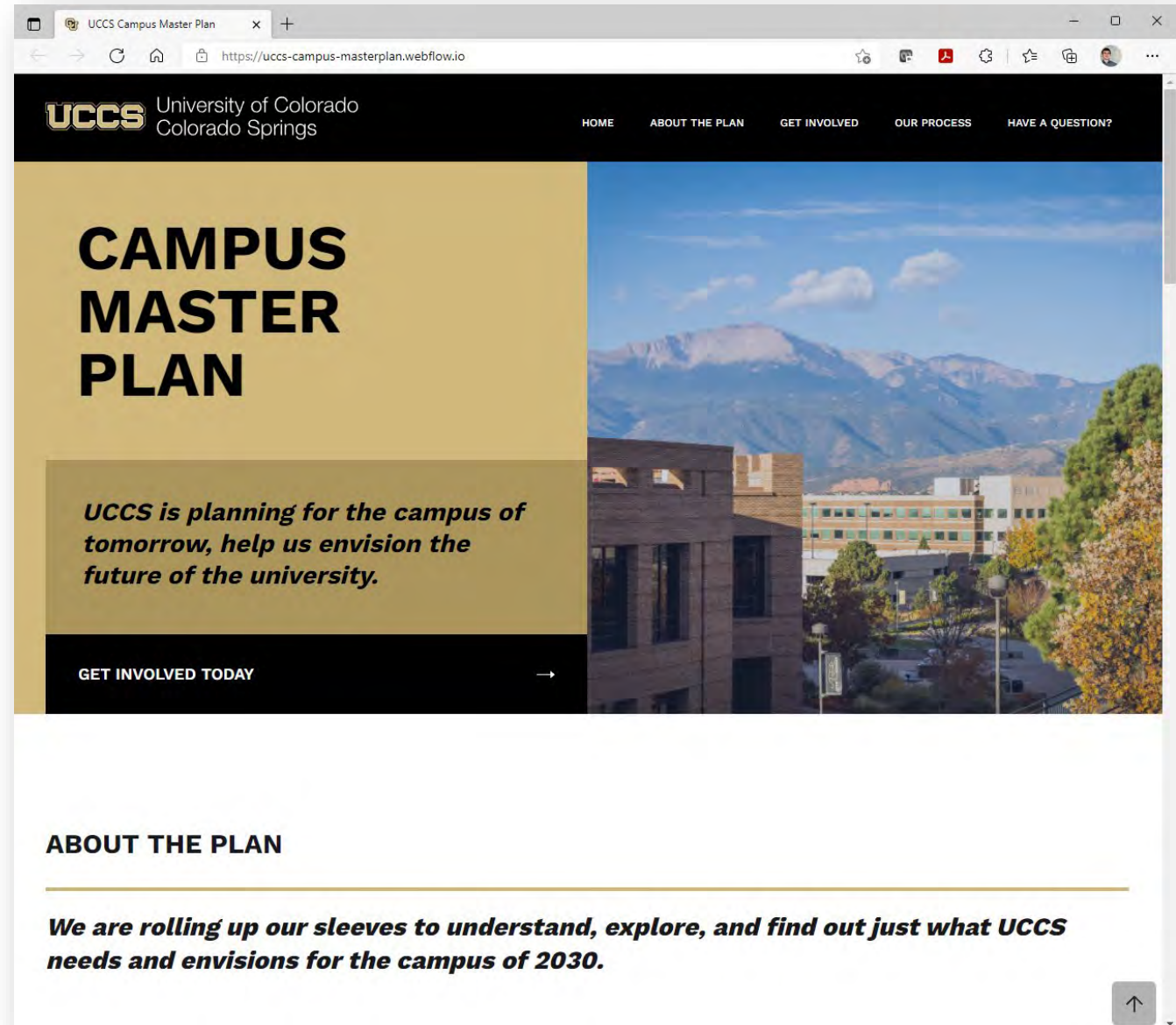
WEBSITE + SURVEY

- **Campus Plan Website**

- <https://uccs-campus-masterplan.webflow.io/>

- **Map My UCCS Survey**

- <https://mapmy.SmithGroup.com/UCCS/>





DISCOVERY FINDINGS

3

WHO WE'VE MET WITH

THANK YOU FOR THE GREAT INPUT!

CORE TEAMS:

- WORKING GROUP
- EXECUTIVE COMMITTEE
- STEERING COMMITTEE

ADMINISTRATION & FINANCE:

- Chancellor Reddy
- Campus Planning & Facilities Management
- Enrollment Management
- Facilities Services
- Planning, Design, & Construction
- Policy & Space
- Public Safety
- Sustainability
- Student Support & Retention

STUDENT AFFAIRS

- Academic Advising, Career Center, Family Programs
- Auxiliary Services (Housing, Dining, Retail, Farm)
- Dean of Students
- Ent Center for the Arts
- Family Development Center
- Intercollegiate Athletics
- Health & Wellness (Recreation, Disabilities Services, Health Services, Mental Health Services, Wellness Promotion)
- Housing & Residence Life
- International Affairs, MOSAIC / LGBTQ+, Veteran & Military Affairs
- Student Life & Assessment
- University Center & Events

ADVANCEMENT & DEVELOPMENT:

- Alumni Fund & Relations
- Development
- Marketing & communication
- University Events

ACADEMIC UNITS:

- College of Business
- College of Engineering
- College of Letters, Arts, & Sciences
- College of Nursing
- Kraemer Family Library
- Research
- School of Public Affairs
- Undergraduate Education & Academic Planning

COMMUNITY / NEIGHBORS:

- Colorado Springs Chamber of Commerce
- Colorado Springs Utilities
- Regional Leadership Forum

OPEN INVITES:

- Open Forums
- Pop-Up Engagement

THE FUTURE OF UCCS

THE BIG PICTURE: WHAT WE HEARD

RETENTION

- The key to enrollment growth is by better serving students to increase retention

IN-PERSON/REMOTE/HYBRID LEARNING & WORKING

- Flexibility is the future

CULTURAL SHIFT

- Evolve from a scrappy campus into one that better matches resources with needs

FUNDING MODELS

- Public-private partnerships are needed to fill the void left by declining state funding

CAMPUS & COMMUNITY

- Strengthen UCCS's presence in the community and the community's presence on campus

CAMPUS NAVIGATION & EXPERIENCE

- Improve campus access by developing distinctive gateways, & intuitive wayfinding
- Unite the campus with a common design language and series of open spaces which celebrate UCCS's unique geography and location

LINK & UNITE UCCS

- Connect West and Central campuses by focusing development on Clyde Way

2030 SUSTAINABILITY STRATEGIC PLAN

4 CORE STRATEGIES

- 1 **Foster a culture** of sustainability at UCCS and beyond.
- 2 **Model sustainability**, efficiency, and innovation in our campus operations, infrastructure, and facilities management
- 3 **Cultivate excellence** in research and teaching related to sustainability, climate change, energy, and environmental justice and equity.
- 4 **Engage UCCS students, faculty, staff, and members of the Colorado Springs community** with event and programming related to sustainability.

2030 SUSTAINABILITY STRATEGIC PLAN

FACILITIES & CAMPUS PLAN IMPACTS

■ Space Needs

- Increase number of approved courses for the Compass Curriculum Sustainability requirement.
- Increase number of faculty involved in sustainability-related research.
- Provide community with sustainability learning experiences.

■ Waste Streams

- Integrate cradle-to-cradle understanding of what we are purchasing and what waste stream is available for increased diversion from the landfill.

■ Transportation

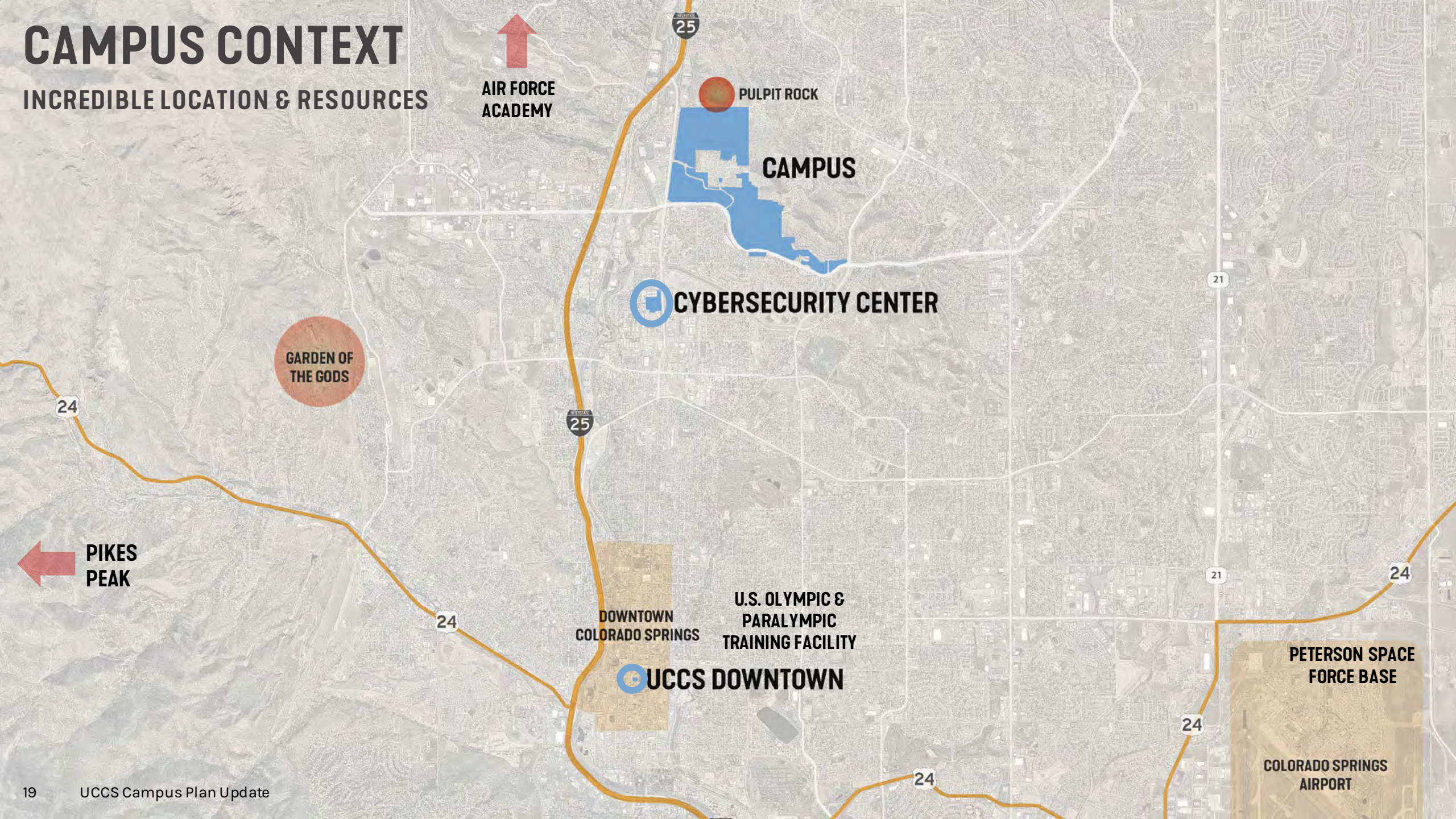
- Integrate and support Transportation Demand Management principles with the goal of reducing the number of vehicles, vehicle trips, and vehicle miles driven.
- Reduce number of single occupancy vehicles commuting to/from campus.

■ Buildings & Infrastructure

- Reduce Greenhouse Gas Emissions, Energy Use Intensity, and Water Use Intensity.
- Pursue Net Zero Energy through conservation, energy efficient technologies, and producing or purchasing renewable energy.

CAMPUS CONTEXT

INCREDIBLE LOCATION & RESOURCES



UCCS TODAY

A LINEAR CAMPUS WITHIN
A UNIQUE LANDSCAPE



CAMPUS SPACES

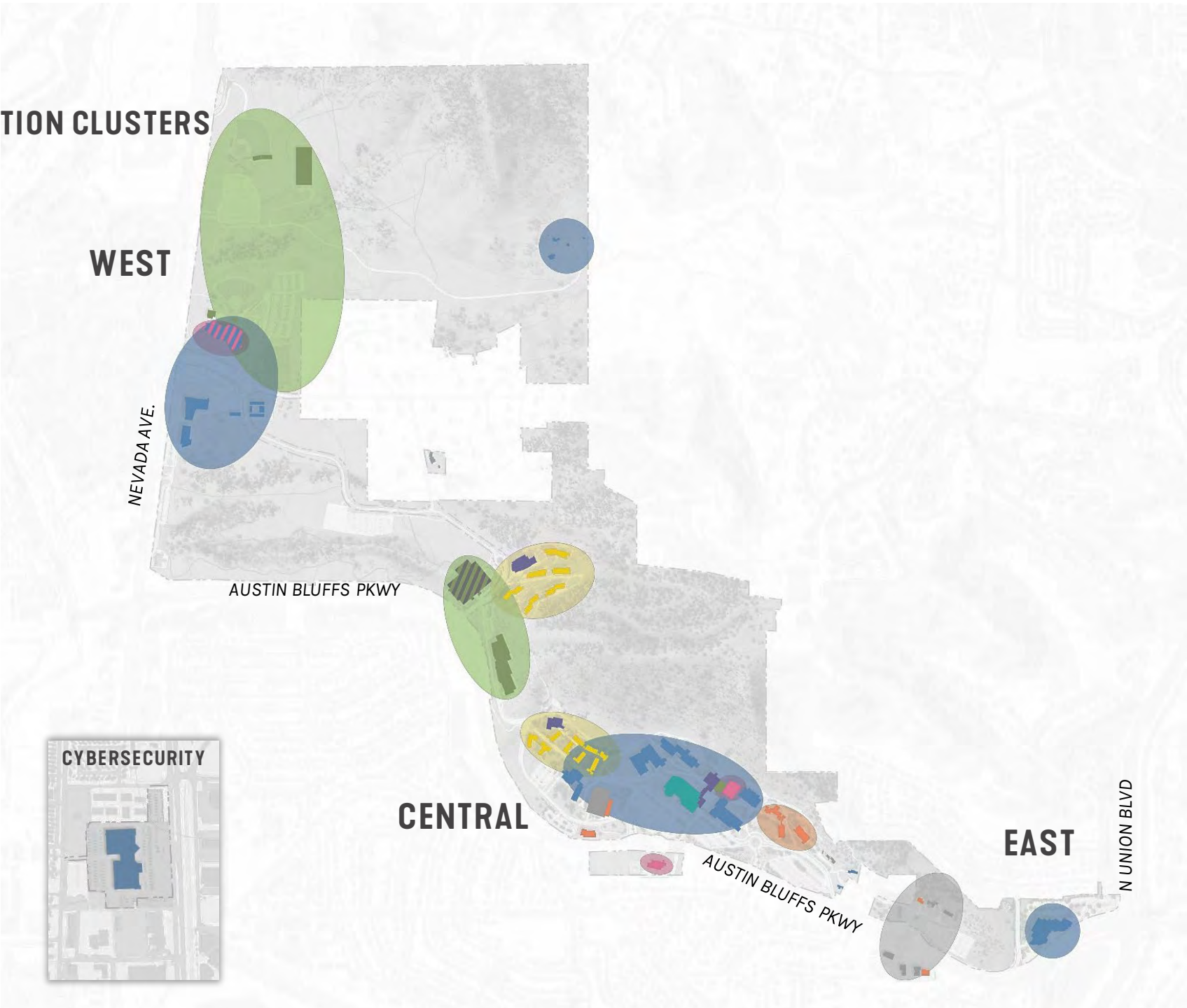


BUILDING USE ZONES

COMPACT RES LIFE, ATHLETIC, AND RECREATION CLUSTERS
LEARNING NODES ARE SEPARATED

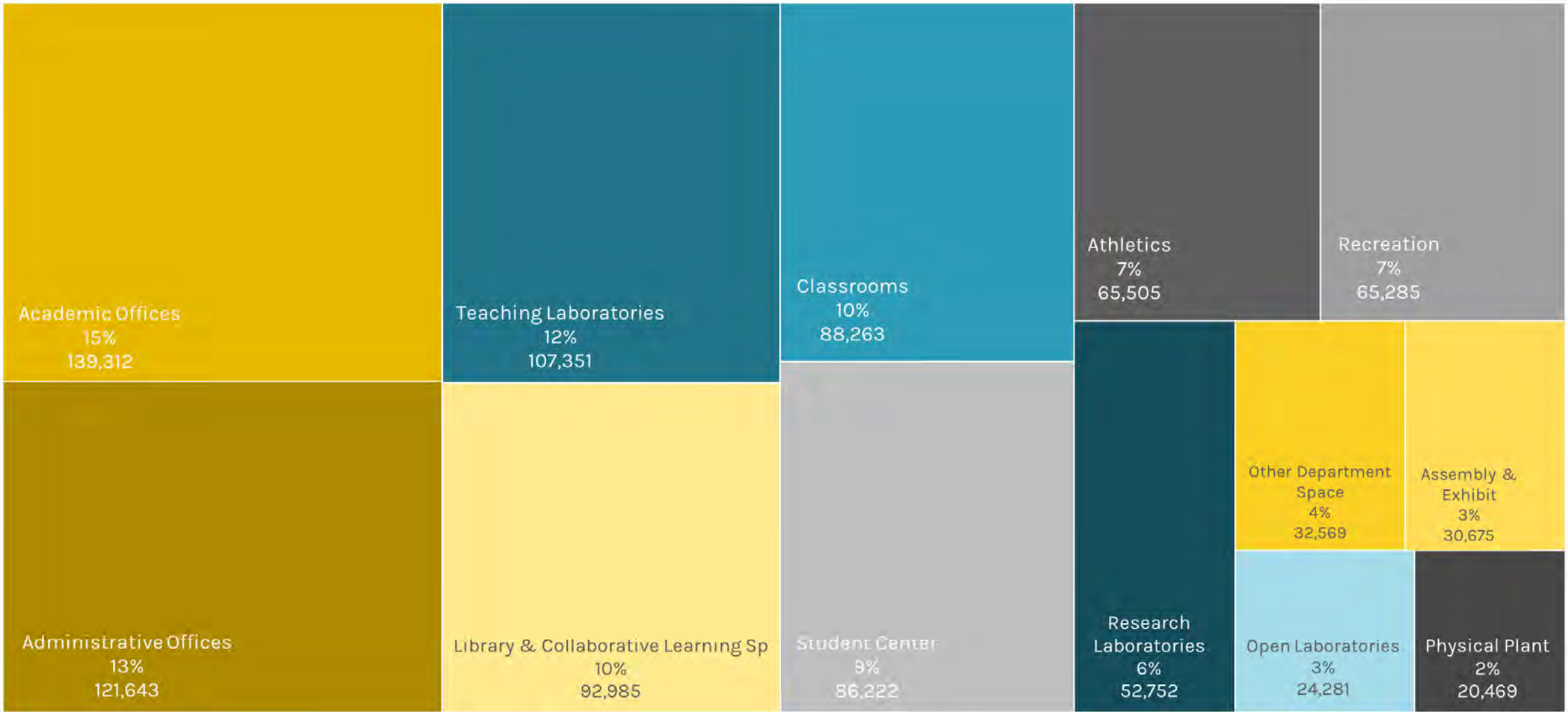
LEGEND

- Academic & Research
- Athletics & Recreation
- Housing
- Student Life & Dining
- Library
- Public Facilities
- Administration
- Services



EXISTING SPACE

MAIN CAMPUS | 927,313 TOTAL ASSIGNABLE SQUARE FEET (ASF)NOT INCLUDING: RESIDENCE LIFE, OUTSIDE ORGANIZATIONS, INACTIVE CONVERSION SPACE



CLASSROOM SPACE UTILIZATION

BY DAY AND TIME

UNIVERSITY OF COLORADO COLORADO SPRINGS • MAIN CAMPUS
Scheduled Classroom Use by Day and Time (Fall 2019)

Time of Day	Monday		Tuesday		Wednesday		Thursday		Friday		Average	
	Rooms in Use	% In Use	Rooms in Use	% In Use	Rooms in Use	% In Use	Rooms in Use	% In Use	Rooms in Use	% In Use	Rooms in Use	% In Use
7:00 AM	1	1%	0	0%	1	1%	0	0%	0	0%	0	1%
8:00 AM	49	64%	48	62%	49	64%	47	61%	30	39%	45	58%
9:00 AM	61	79%	59	77%	60	78%	56	73%	50	65%	57	74%
10:00 AM	65	84%	65	84%	64	83%	62	81%	55	71%	62	81%
11:00 AM	59	77%	61	79%	61	79%	59	77%	53	69%	59	76%
12:00 PM	61	79%	64	83%	65	84%	60	78%	55	71%	61	79%
1:00 PM	60	78%	64	83%	63	82%	63	82%	47	61%	59	77%
2:00 PM	55	71%	61	79%	52	68%	56	73%	41	53%	53	69%
3:00 PM	53	69%	59	77%	57	74%	55	71%	34	44%	52	67%
4:00 PM	61	79%	62	81%	62	81%	63	82%	33	43%	56	73%
5:00 PM	53	69%	54	70%	48	62%	53	69%	11	14%	44	57%
6:00 PM	51	66%	45	58%	43	56%	42	55%	8	10%	38	49%
7:00 PM	48	62%	41	53%	43	56%	41	53%	8	10%	36	47%

Total classrooms = 77

Darker colors indicate a large percentage of rooms are scheduled. Maximum is 65 rooms, 84% scheduled.

CLASSROOM SPACE UTILIZATION

BY BUILDING

- Existing average usage
 - 38 weekly room hours
 - 65% seat fill
 - 20 ASF/student station
- Recommended Guidelines
 - 35 weekly room hours
 - 70% seat fill rate
 - 25 ASF/student station

UNIVERSITY OF COLORADO COLORADO SPRINGS • MAIN CAMPUS

Classroom Utilization Analysis by Building Summary

Fall 2019

Building Name and ID		No. of Rooms	Average Room Size	Average ASF per Station	Average Section Size	Weekly Seat Hours	Average Weekly Room Hours	Seat Fill Rate
Breckenridge House	25	1	1,320	27.5	36	33.7	45.5	74%
Centennial Hall	10	8	1646	18.9	48	26.9	50.9	62%
Columbine Hall	15	20	748	18.1	26	31.8	48.7	73%
Cucharas House	145	1	1679	20.0	39	20.0	42.8	47%
Dwire Hall	9	11	792	17.2	25	26.0	44.2	62%
Eagle Rock Modular 204	204	2	861	29.7	0	0.0	0.0	0%
El Pomar Center	12B	1	744	26.6	21	12.2	16.5	74%
Engineering & Applied Science	14	6	810	16.2	29	34.3	49.4	61%
Ent' Center for the Arts	300	1	832	26.0	14	10.9	24.5	45%
Ent' Center Set Shop	300A	1	727	0.0	0	---	0.0	0%
Hybl . Sports Med Performance Center	255	5	1,456	24.1	0	0.0	0.0	0%
Lane Center	250	1	987	24.7	22	23.3	40.6	57%
Osborne Center	32	7	917	22.0	27	29.5	45.5	65%
UCCS Downtown	102	1	777	0.0	0	---	0.0	0%
University Hall	70	11	1,309	22.1	27	12.0	25.0	57%
Total No. of Rooms = 77		AVERAGE	1,021	20.3	26	23.2	38.0	65%
Total No. of Stations = 3,866		Total ASF	78,590					

TEACHING LAB SPACE UTILIZATION

BY DAY AND TIME

UNIVERSITY OF COLORADO COLORADO SPRINGS • MAIN CAMPUS
Scheduled Laboratory Use by Day and Time (Fall 2019)

Time of Day	Monday		Tuesday		Wednesday		Thursday		Friday		Average	
	Rooms in Use	% In Use	Rooms in Use	% In Use	Rooms in Use	% In Use	Rooms in Use	% In Use	Rooms in Use	% In Use	Rooms in Use	% In Use
7:00 AM	0	0%	0	0%	0	0%	0	0%	0	0%	0	0%
8:00 AM	21	27%	20	25%	27	34%	25	32%	18	23%	22	28%
9:00 AM	35	44%	36	46%	40	51%	43	54%	24	30%	36	45%
10:00 AM	47	59%	43	54%	47	59%	47	59%	27	34%	42	53%
11:00 AM	37	47%	37	47%	41	52%	38	48%	20	25%	35	44%
12:00 PM	42	53%	40	51%	46	58%	42	53%	25	32%	39	49%
1:00 PM	44	56%	44	56%	50	63%	42	53%	28	35%	42	53%
2:00 PM	41	52%	37	47%	46	58%	36	46%	22	28%	36	46%
3:00 PM	38	48%	32	41%	41	52%	33	42%	17	22%	32	41%
4:00 PM	39	49%	40	51%	43	54%	34	43%	17	22%	35	44%
5:00 PM	17	22%	27	34%	22	28%	19	24%	3	4%	18	22%
6:00 PM	12	15%	19	24%	17	22%	13	16%	2	3%	13	16%
7:00 PM	13	16%	19	24%	18	23%	11	14%	2	3%	13	16%

Total laboratories = 79

Darker colors indicate a large percentage of rooms are scheduled.

TEACHING LAB SPACE UTILIZATION

BY BUILDING

- Existing average usage
 - 19 weekly room hours
 - 72% seat fill
- Recommended Guidelines
 - 20 weekly room hours
 - 80% seat fill

UNIVERSITY OF COLORADO COLORADO SPRINGS • MAIN CAMPUS
Teaching Laboratory Utilization Analysis by Building - Summary

Fall 2019

							Average	
Building Name and ID		No. of Rooms	Average	Average ASF	Average	Weekly Seat	Weekly	Seat Fill
			Room Size	per Station	Section Size	Hours	Room Hours	Rate
Centennial Hall	10	12	1,074	46.7	16	18.0	24.3	73%
Columbine Hall	15	10	839	37.6	15	24.5	33.4	73%
Dwire Hall	09	2	1,001	30.8	26	36.0	44.0	81%
El Pomar Center	12B	2	1,659	62.6	17	4.5	7.2	60%
Engineering & Applied Science	14	8	864	29.8	14	10.3	15.1	61%
Ent Center for the Arts	300	6	1,233	30.2	13	6.6	20.3	43%
Fine Art Building	205	1	1,531	63.8	12	12.8	26.4	48%
Hybl Sports Med Performance Center	255	10	1,234	64.3	0	0.0	0.0	0%
Lane Center	250	1	1,063	265.7	0	0.0	0.0	0%
Osborne Center	32	22	1,024	48.9	14	18.5	20.9	81%
University Hall	70	5	944	63.8	7	6.4	7.1	57%
Total No. of Rooms = 79		AVERAGE	1,052	44.9	12	14.2	18.9	72%
Total No. of Stations = 1,849		Total ASF	83,087					

TYPICAL ON-CAMPUS HOUSING UNIT TYPES



Traditional

- More Communal
- Social Space outside the unit
- Currently, there are no traditional beds on campus
- Better for first and sophomore students



Semi - suite



Suite

- More Independent
- Social Space inside the unit
- Better for upper division and graduate students

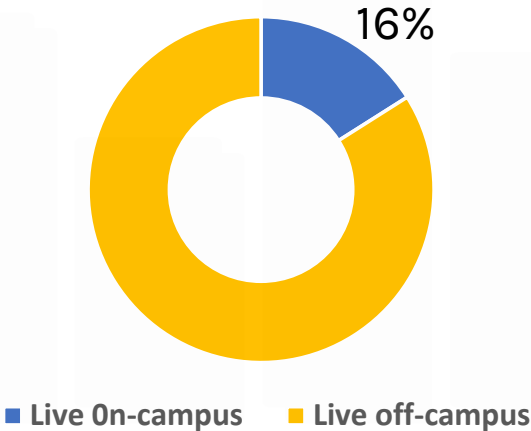


Apartment

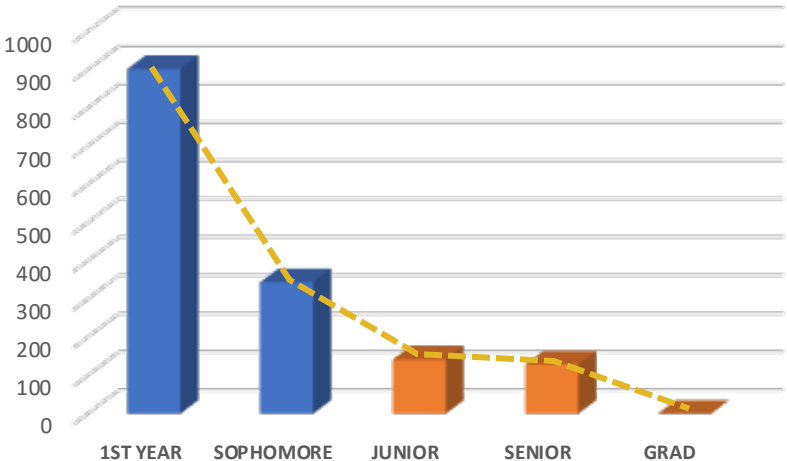
ON-CAMPUS HOUSING

FALL 2021 DATA

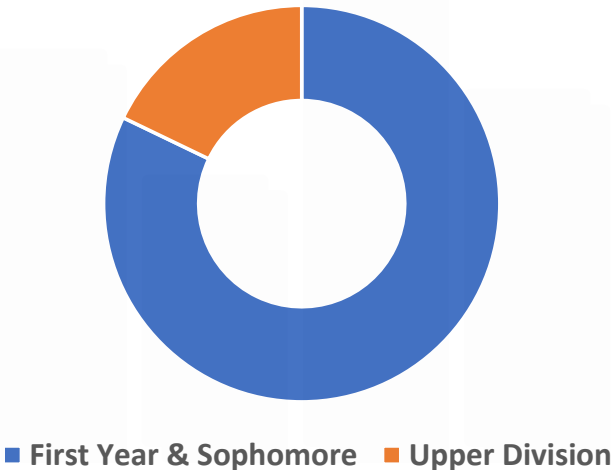
Live On-campus vs. Undergrad Enrollment



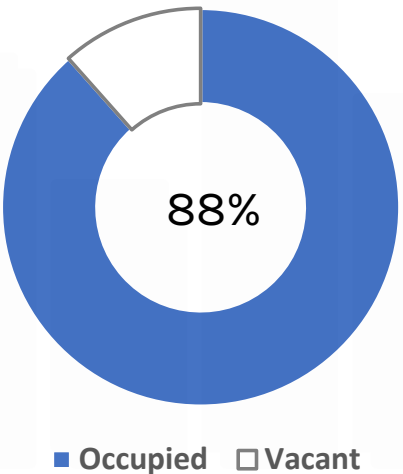
Student Distribution



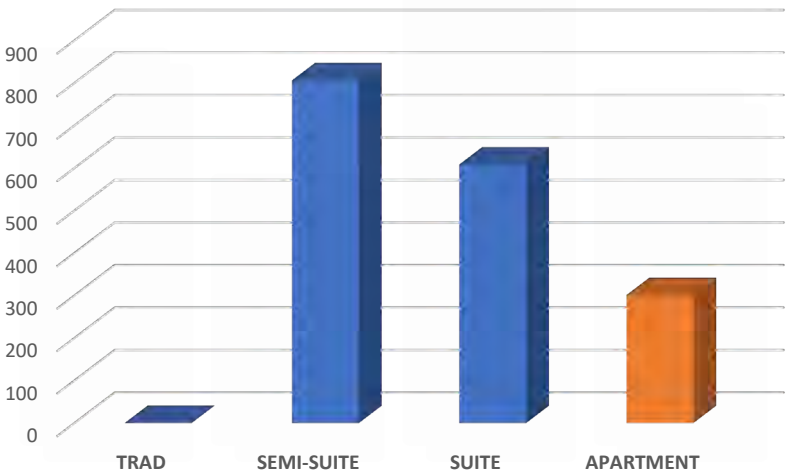
Student Distribution



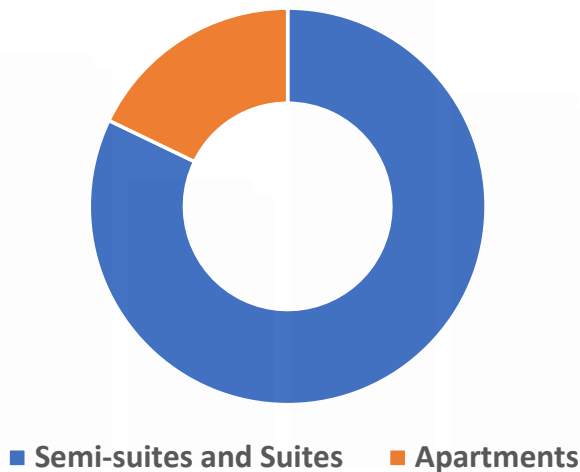
Fall 2021 Occupancy



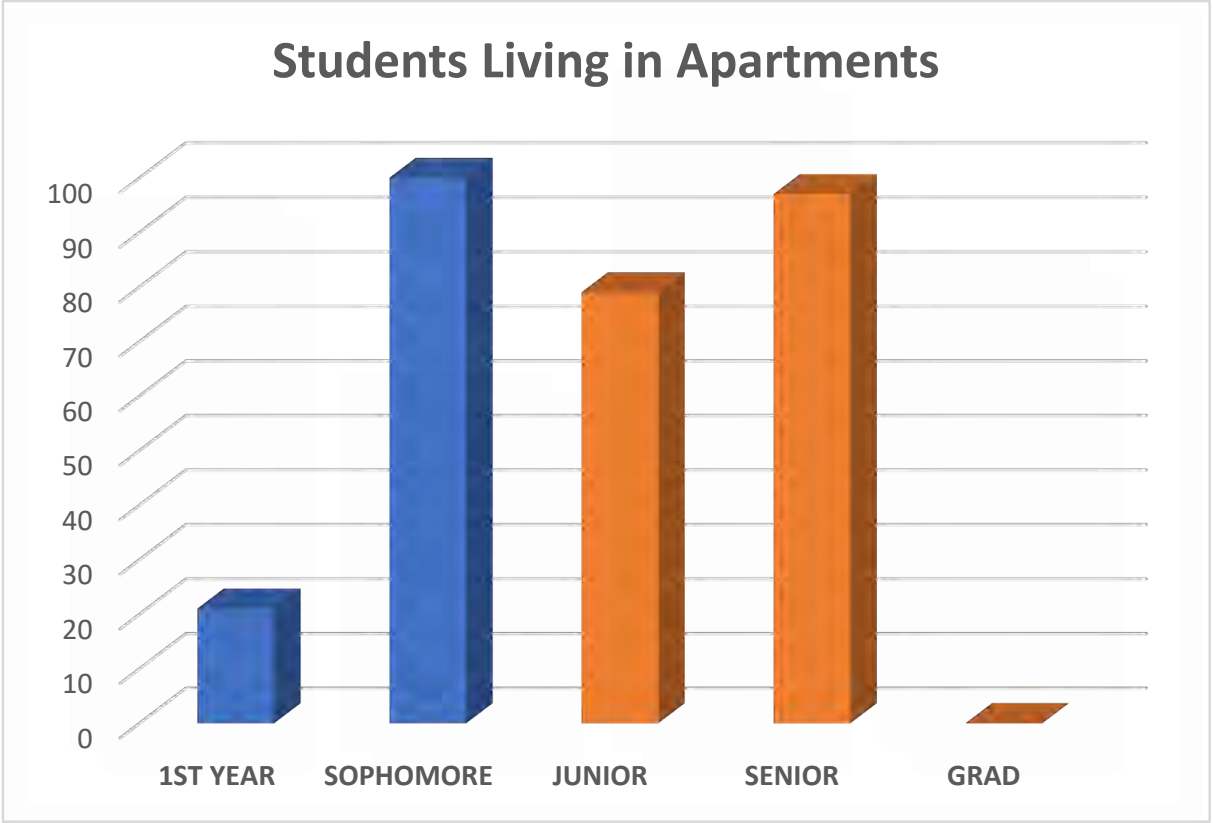
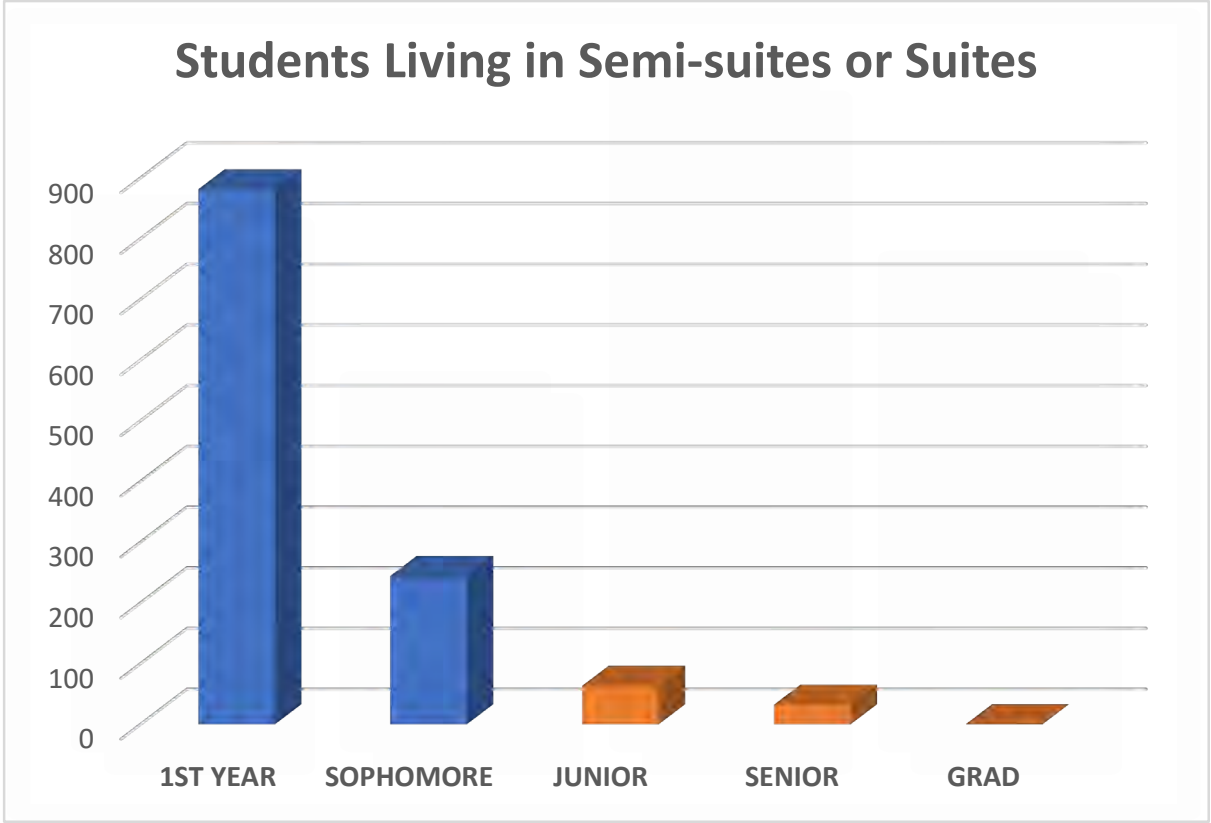
Unit Type Distribution



Unit Type Distribution



ON-CAMPUS HOUSING

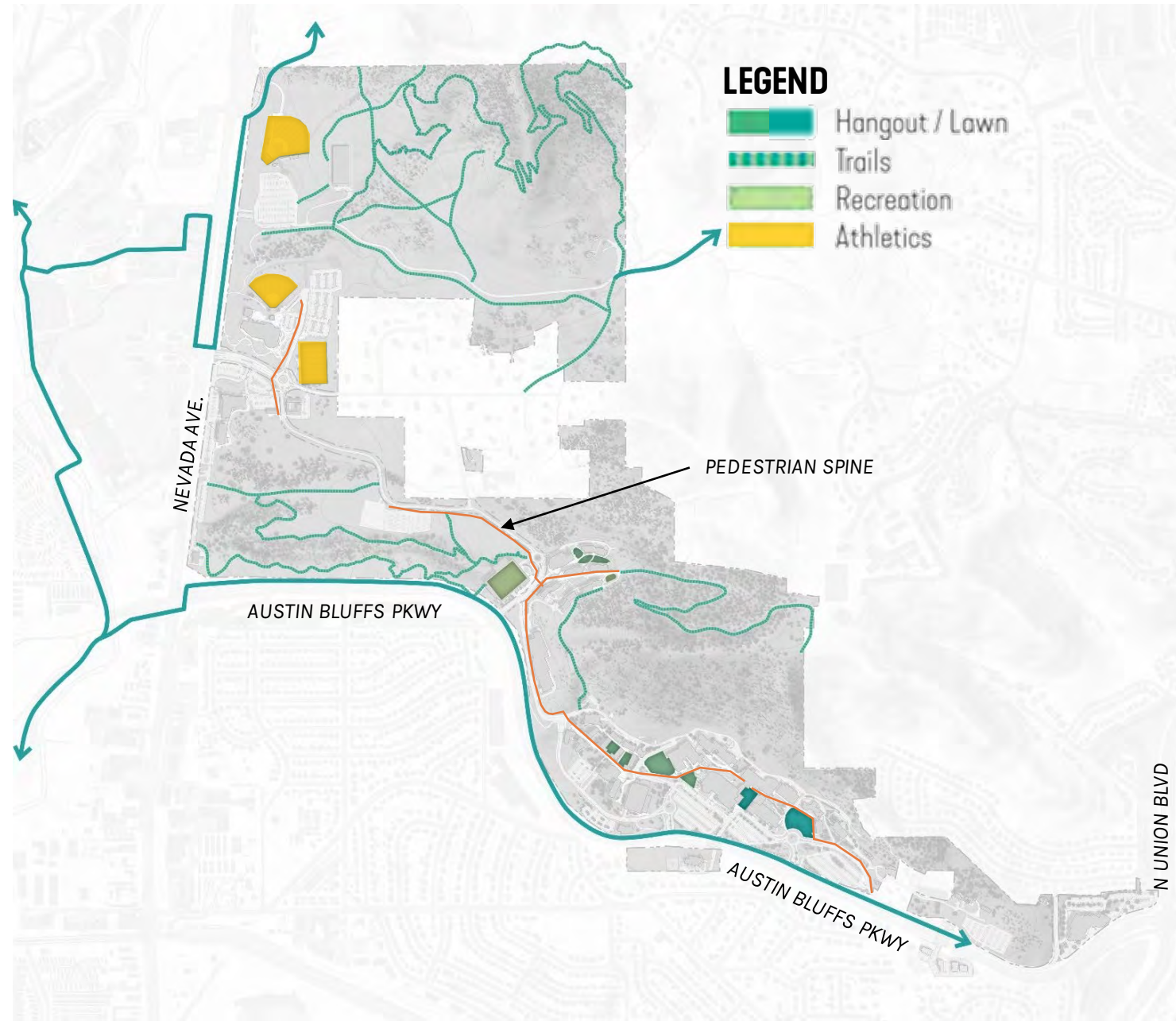


EXTERIOR SPACE

FUNCTIONAL & SUSTAINABLE LANDSCAPES

OPPORTUNITIES

- Hybl: Sports Field (Funded)
- Athletics: Outdoor Track
- Recreation: Multi-Purpose Field
- Passive Recreation Lawn
- Trails
- Skatepark?
- Shaded Hangout / Gathering Spaces
- Outdoor Classrooms

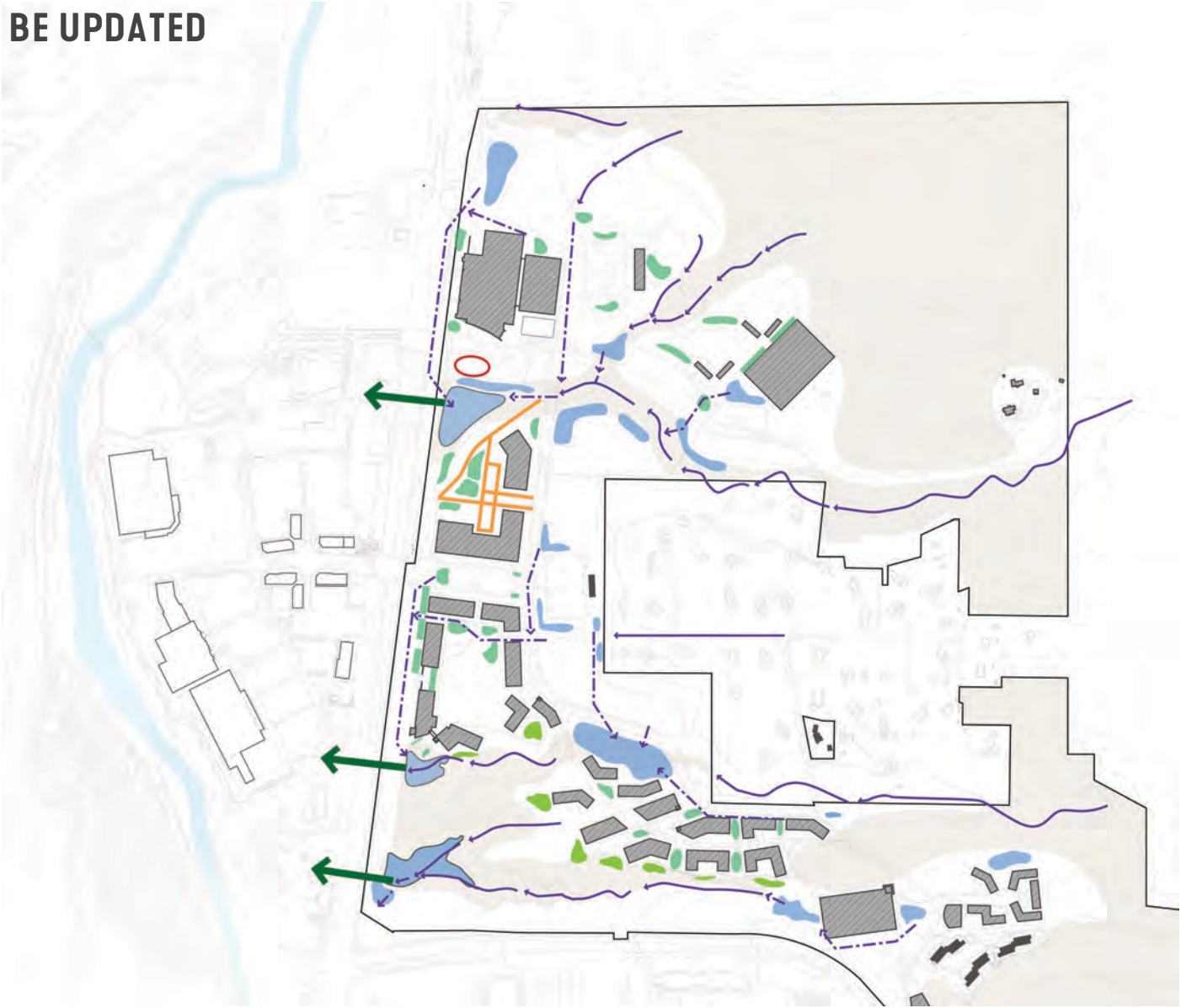


CAMPUS SYSTEMS



STORMWATER & DRAINAGE

2012 PLAN TO BE UPDATED

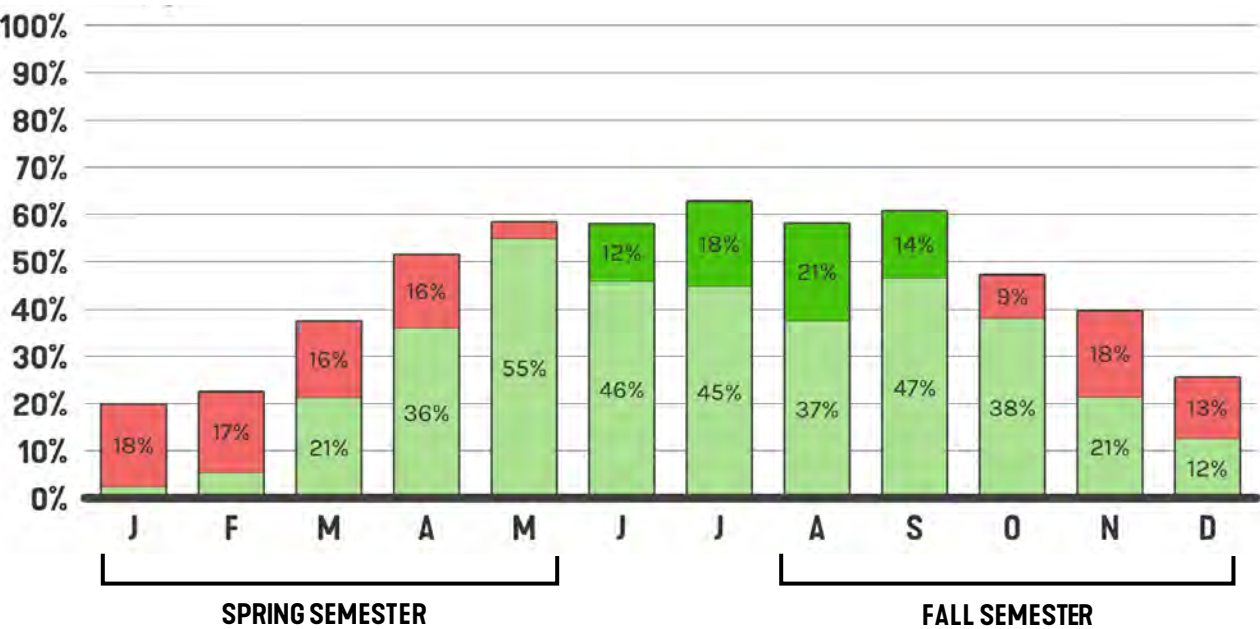


- Natural water flow
- Existing storm sewer
- - - Proposed storm sewer or culvert
- Existing detention area
- Proposed detention /water quality pond
- Proposed rain garden/detention pond
- Proposed rain garden
- Proposed permeable pavement
- Proposed underground treatment
- Existing Buildings
- New Building Sites

WHEN SHOULD WE BLOCK THE SUN AND THE WIND?

LIMITING SHADE AND BLOCKING THE WIND INCREASES COMFORT DURING THE ACADEMIC YEAR

COMFORT IN THE SHADE
PERCENT OF DAYTIME HOURS

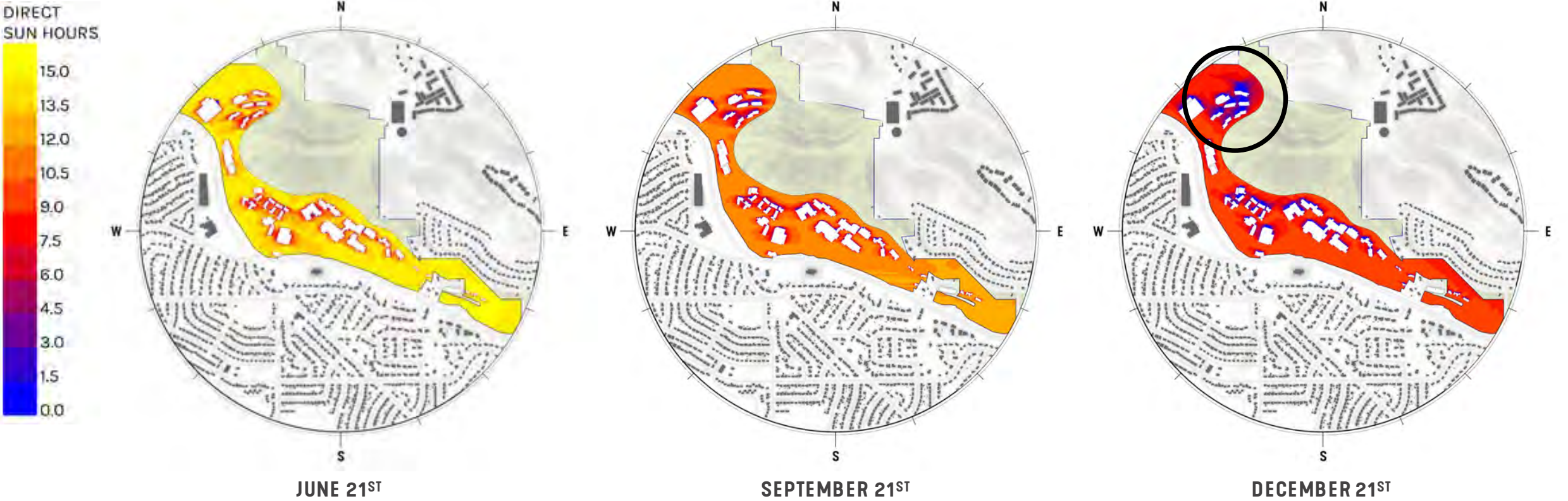


COMFORT WITHOUT WIND
PERCENT OF DAYTIME HOURS



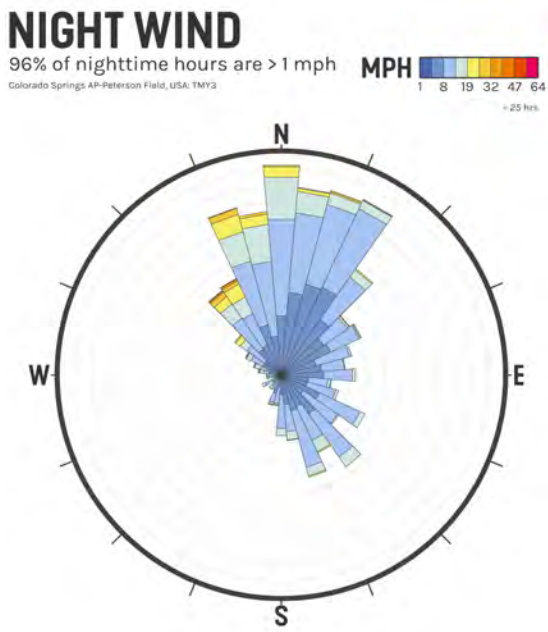
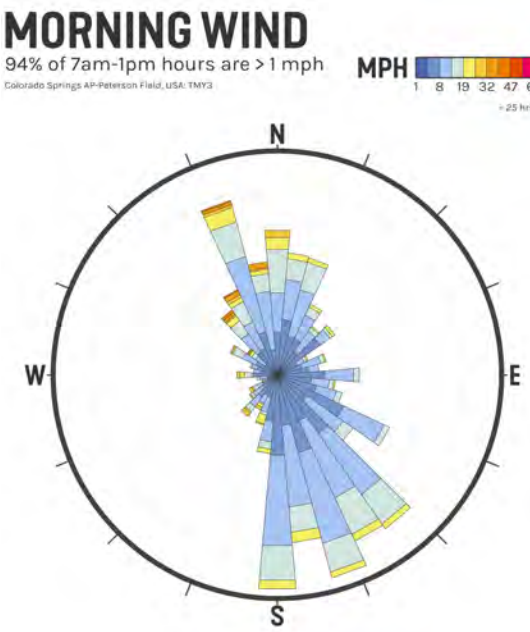
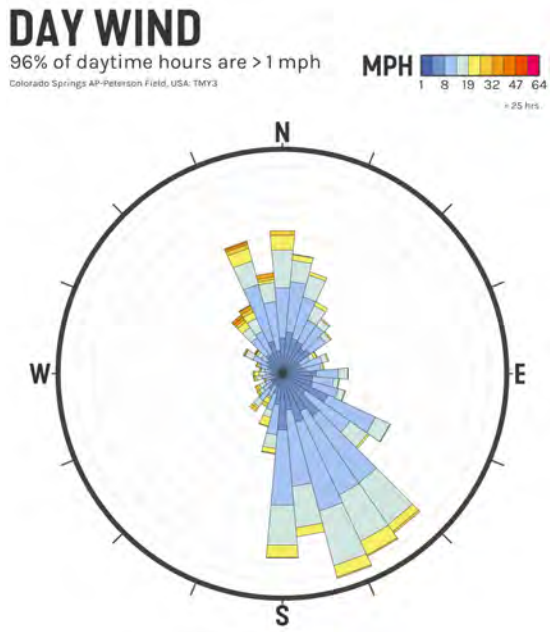
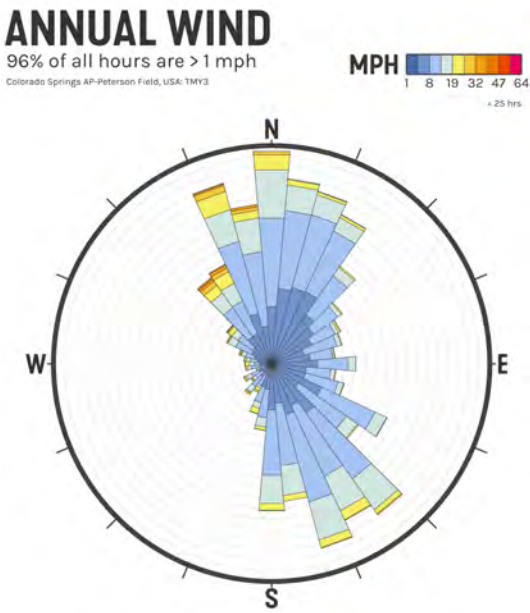
DIRECT SUN HOURS

BUILDING LOCATIONS IMPACT OPPORTUNITIES FOR SUNNY OUTDOOR SPACES



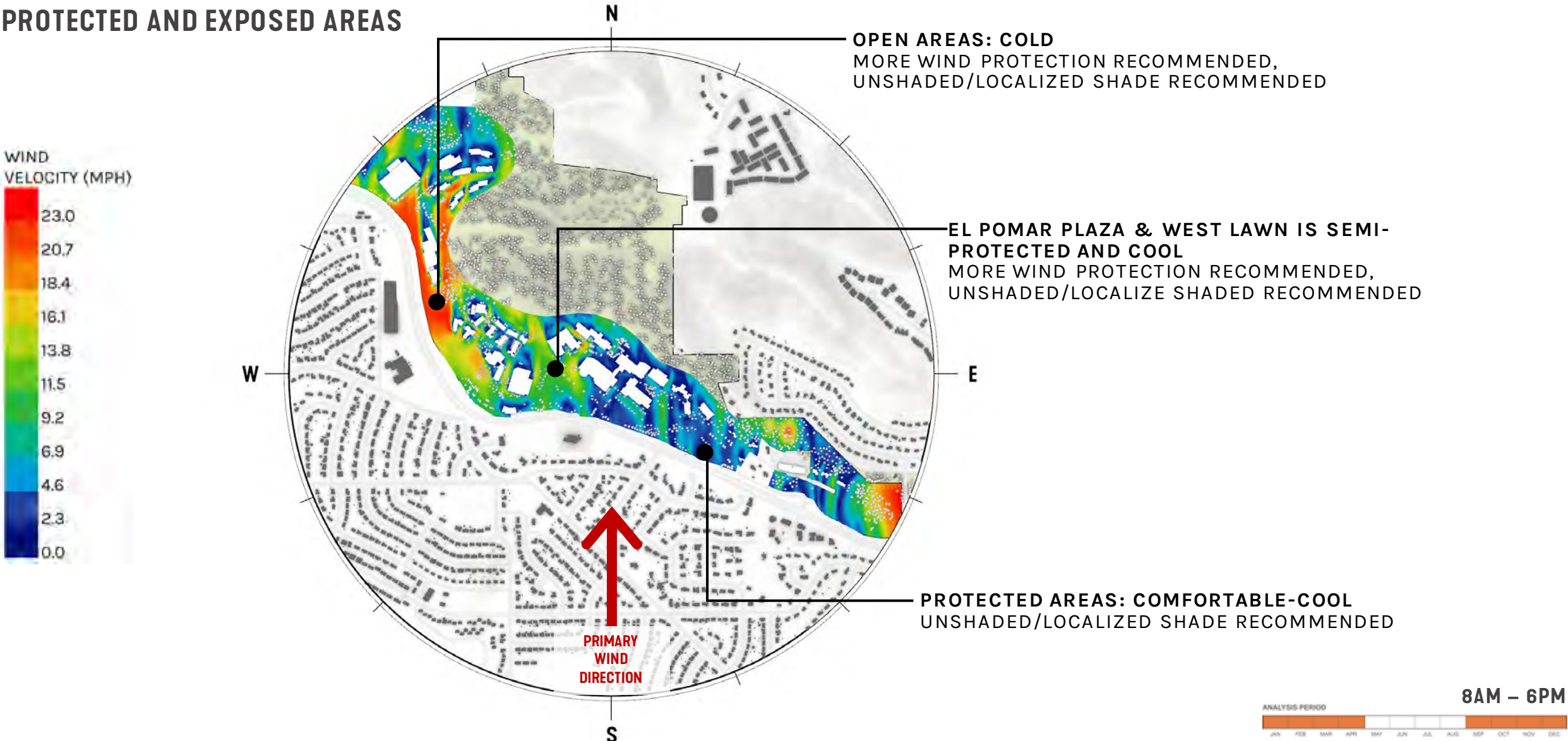
WIND ANALYSIS

PREDOMINANTLY NORTH-SOUTH

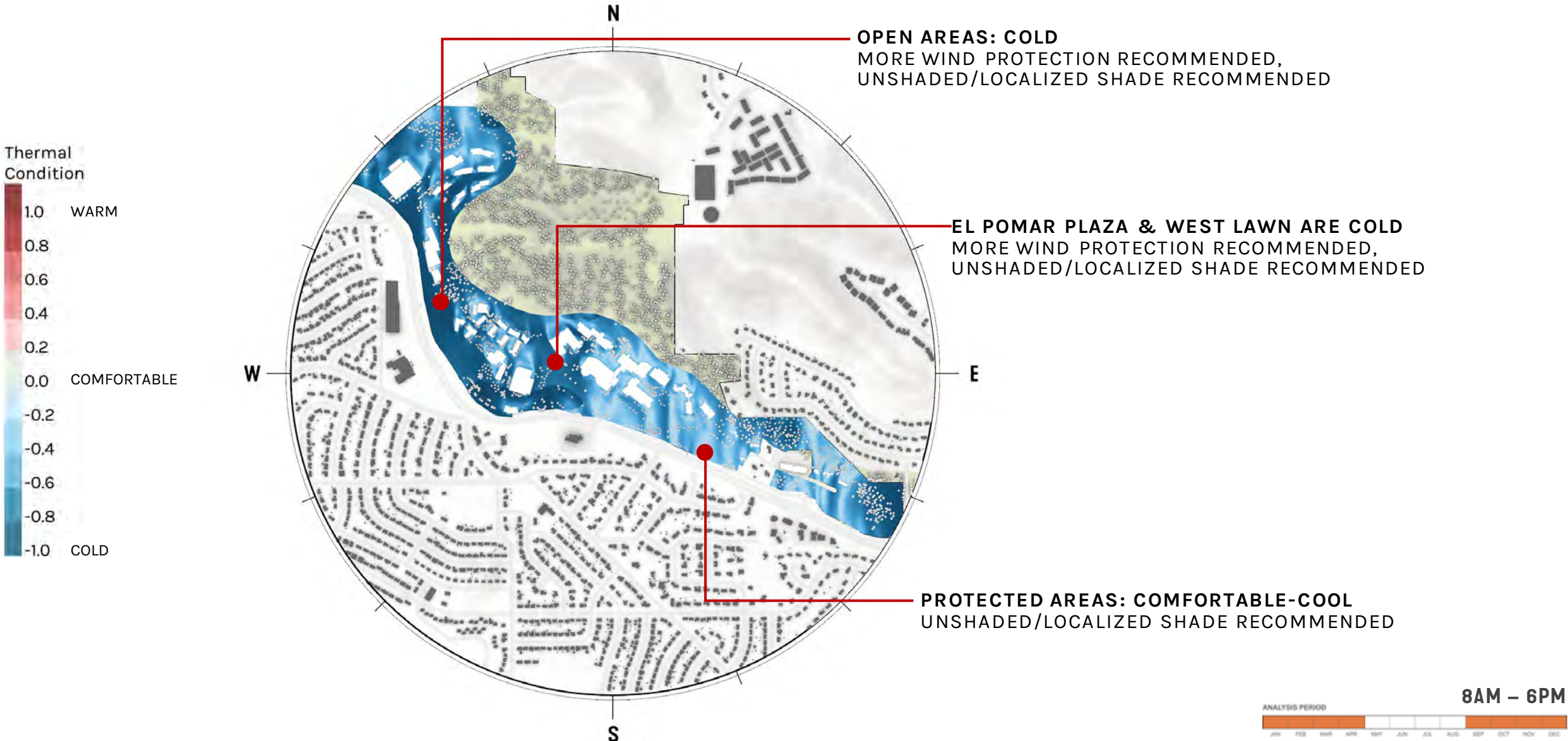


WIND ANALYSIS

PROTECTED AND EXPOSED AREAS

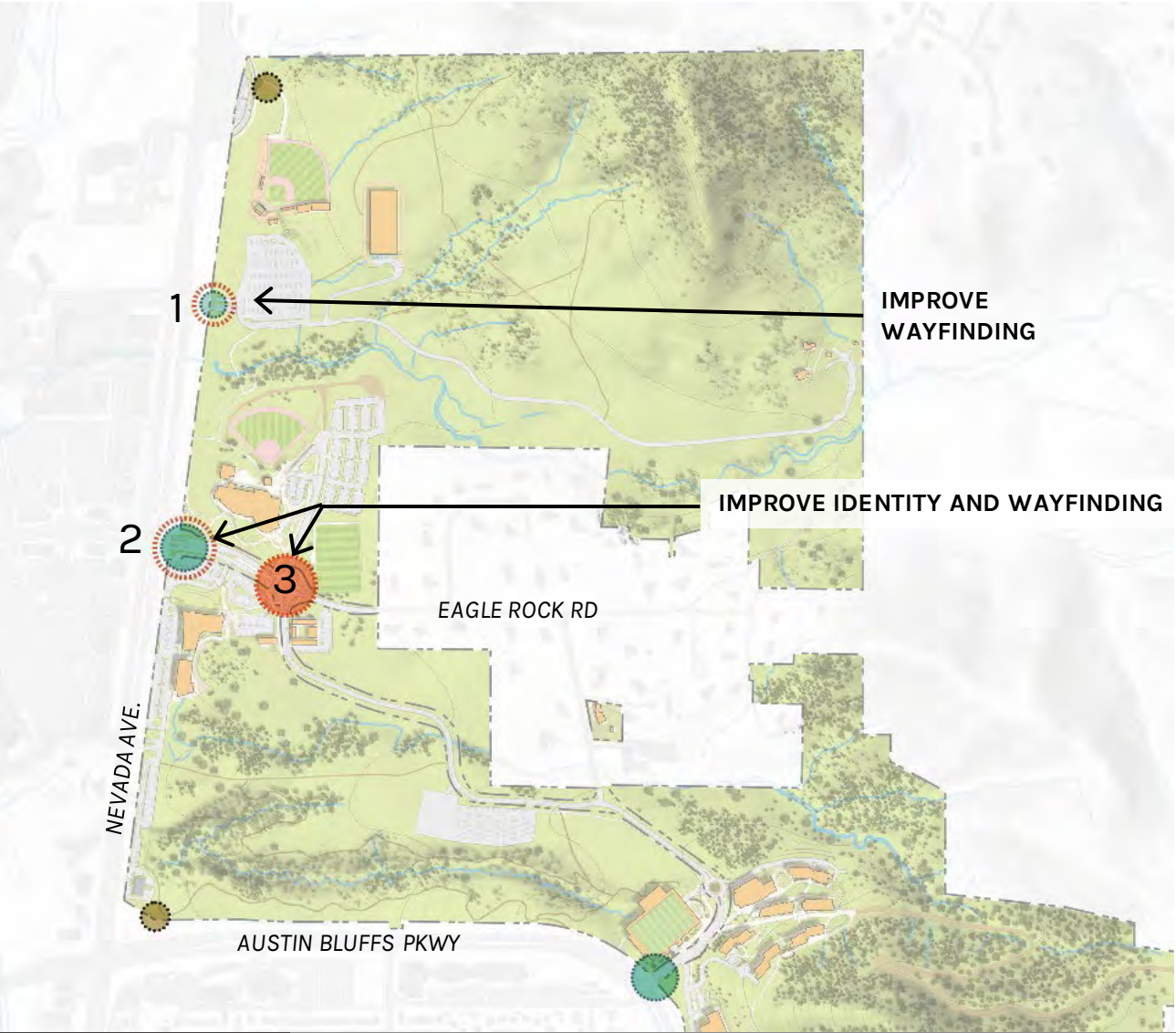


THERMAL CONDITION SEPT-MAY



CAMPUS GATEWAYS & EDGES

WEST CAMPUS

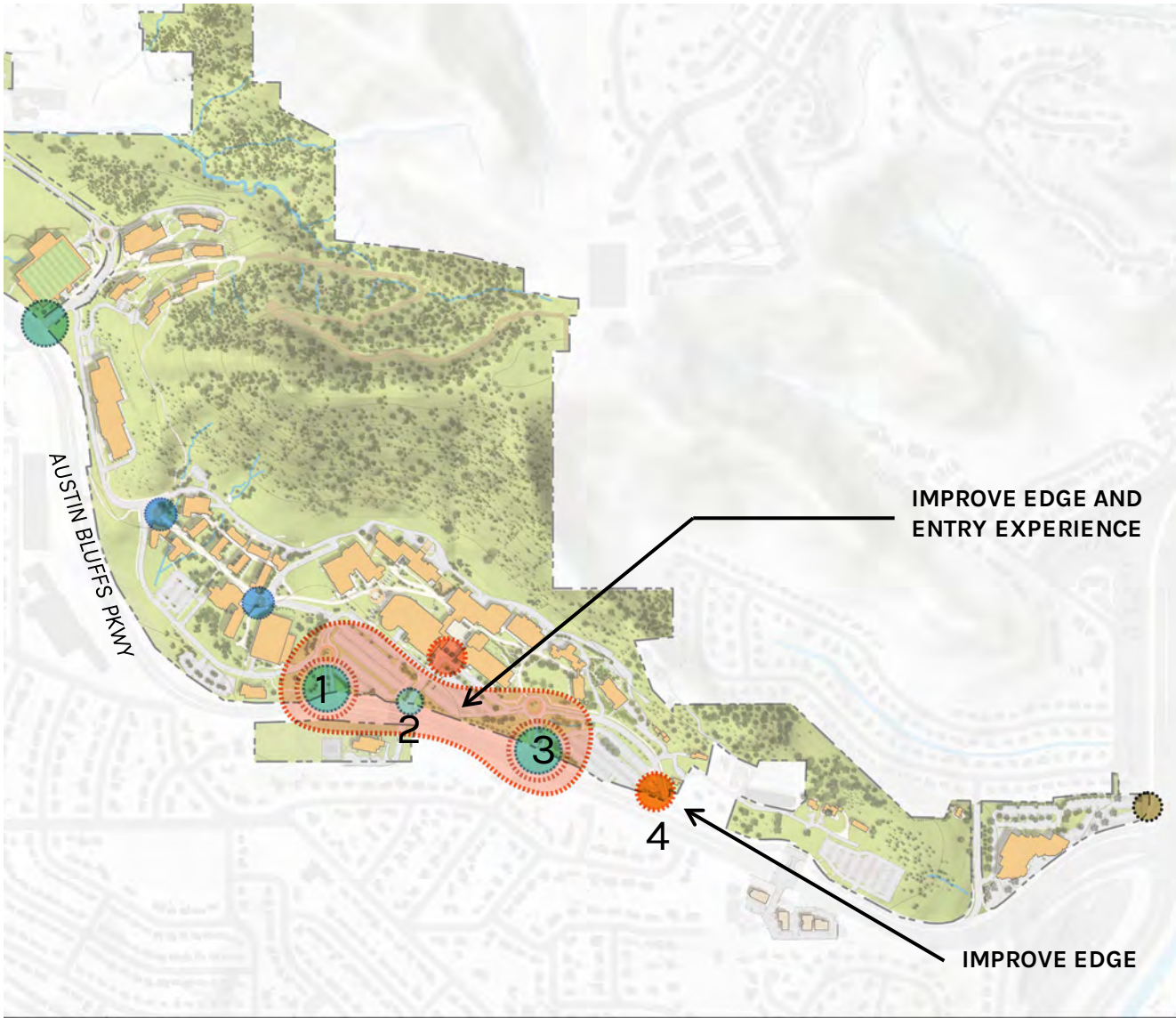


LEGEND

- Primary Vehicular
- Secondary Vehicular
- Pedestrian
- Campus Edge
- Opportunity

CAMPUS GATEWAYS & EDGES

CENTRAL AND EAST CAMPUS

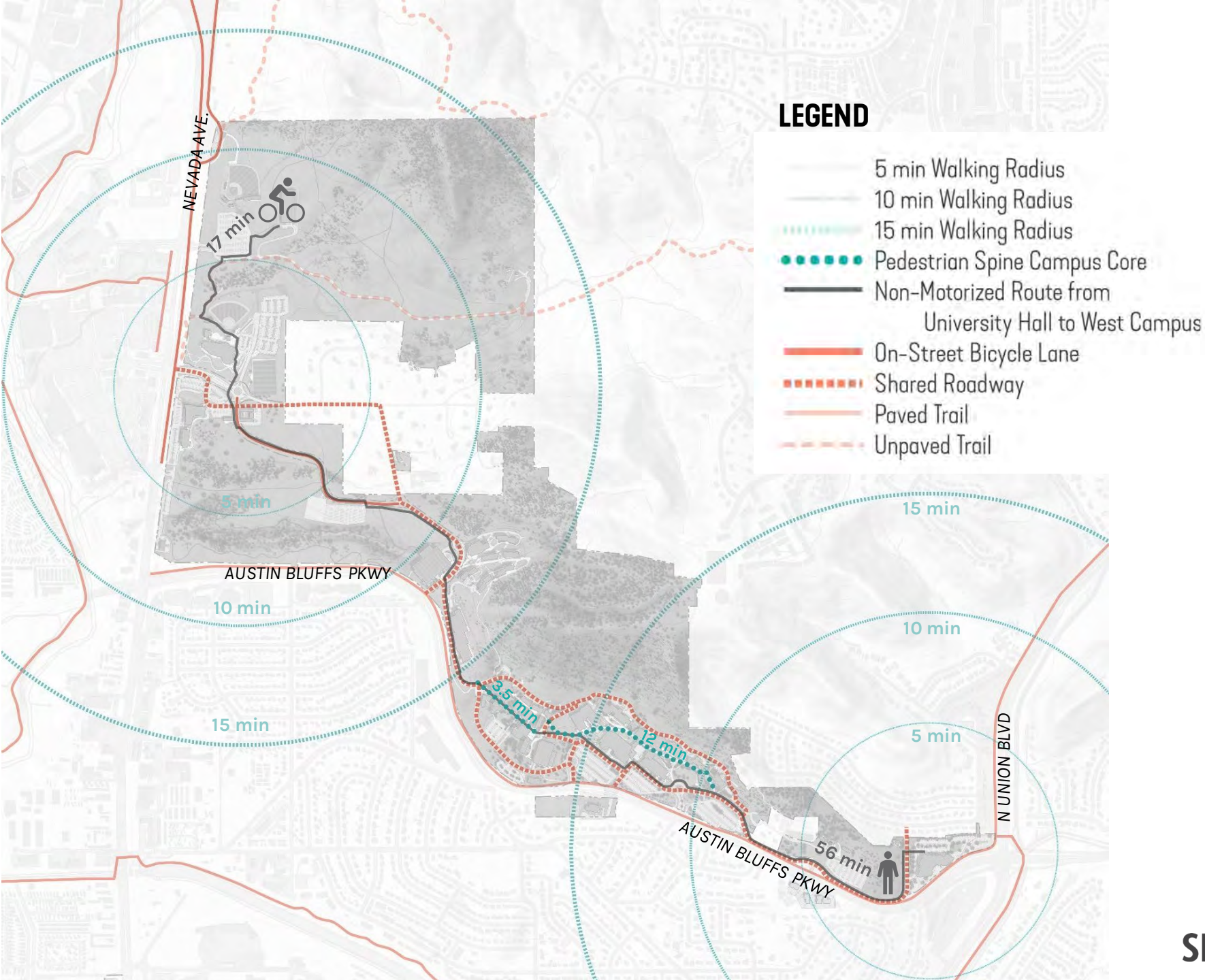


LEGEND

- Primary Vehicular
- Secondary Vehicular
- Pedestrian
- Compus Edge
- Opportunity

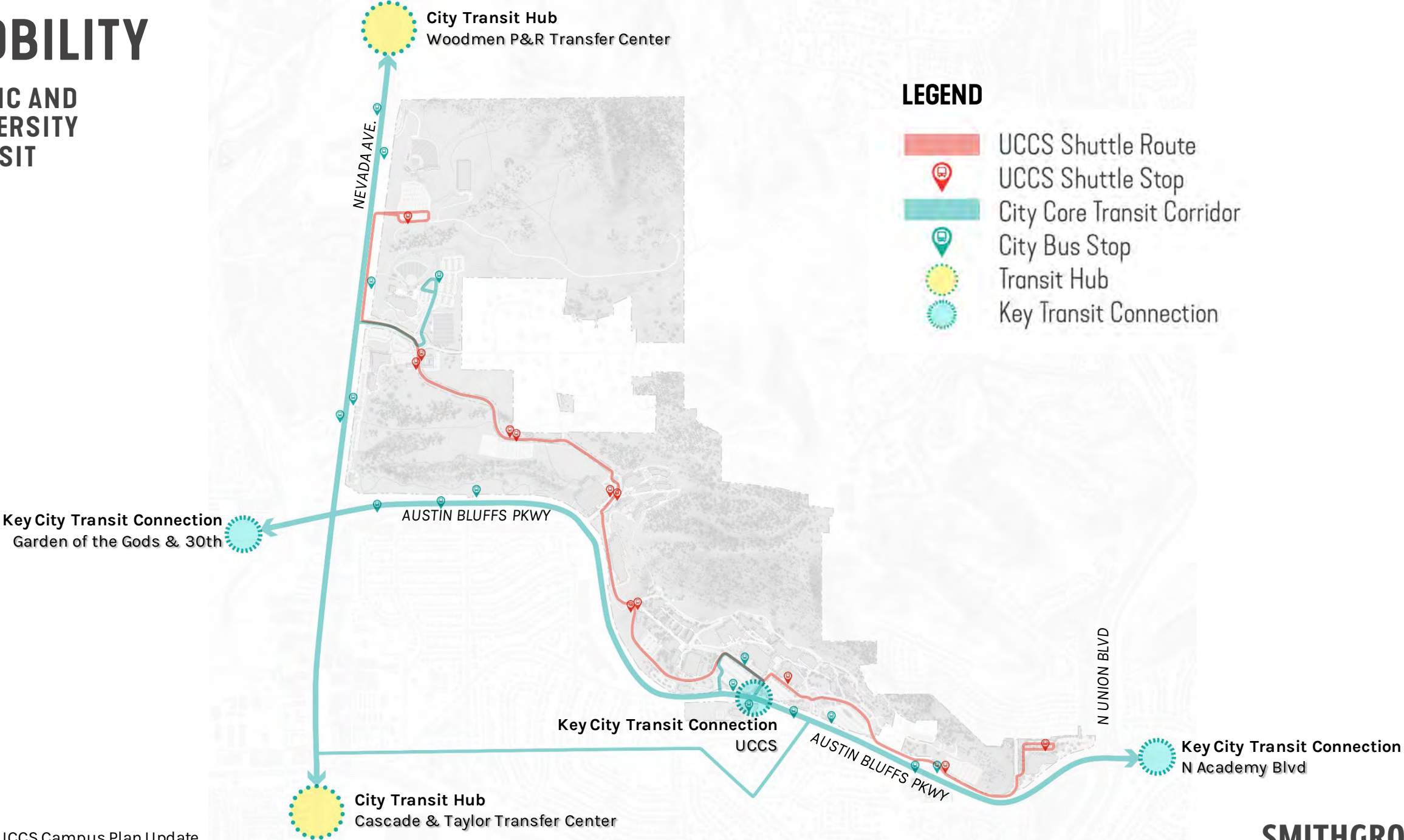
MOBILITY

PEDESTRIAN + BICYCLE CIRCULATION

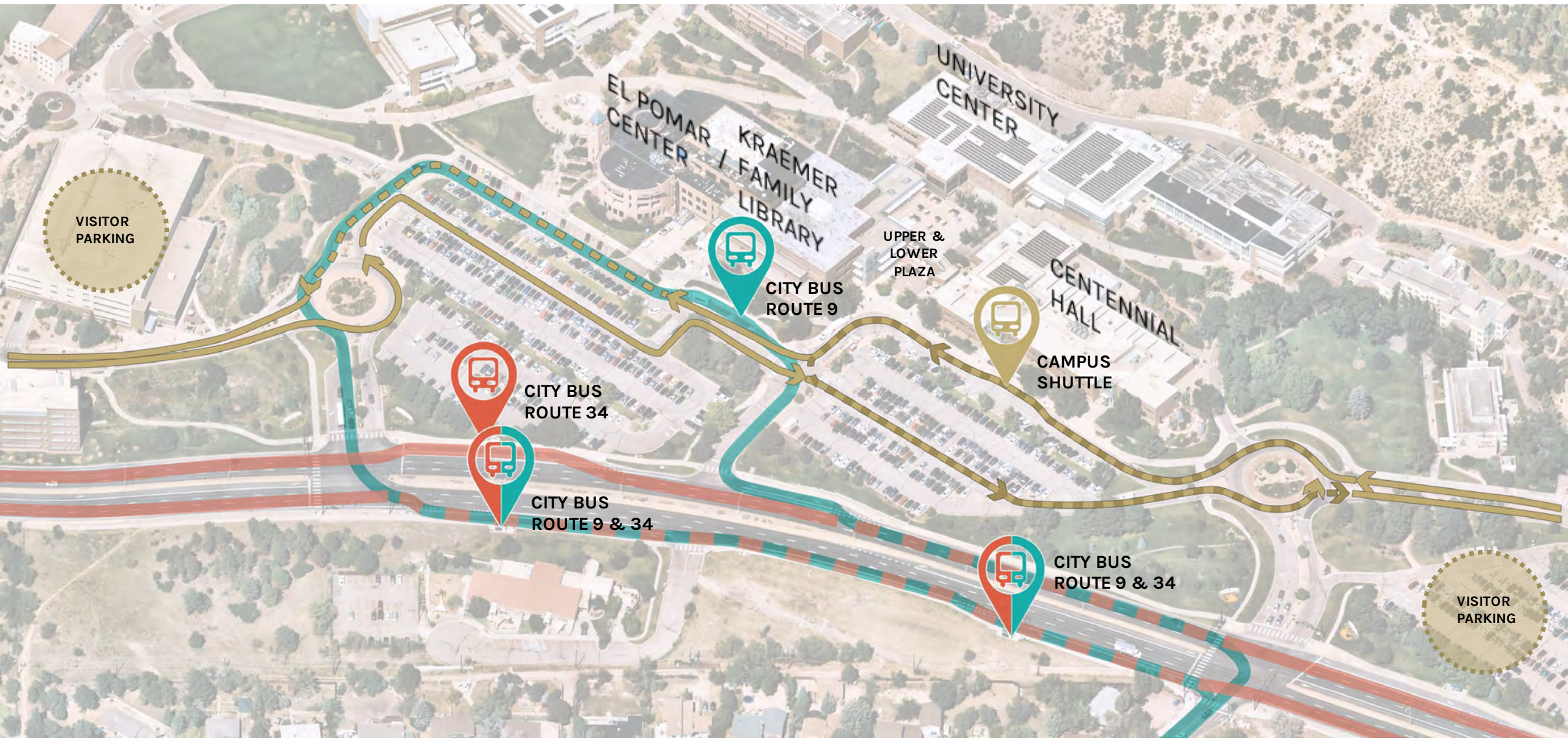


MOBILITY

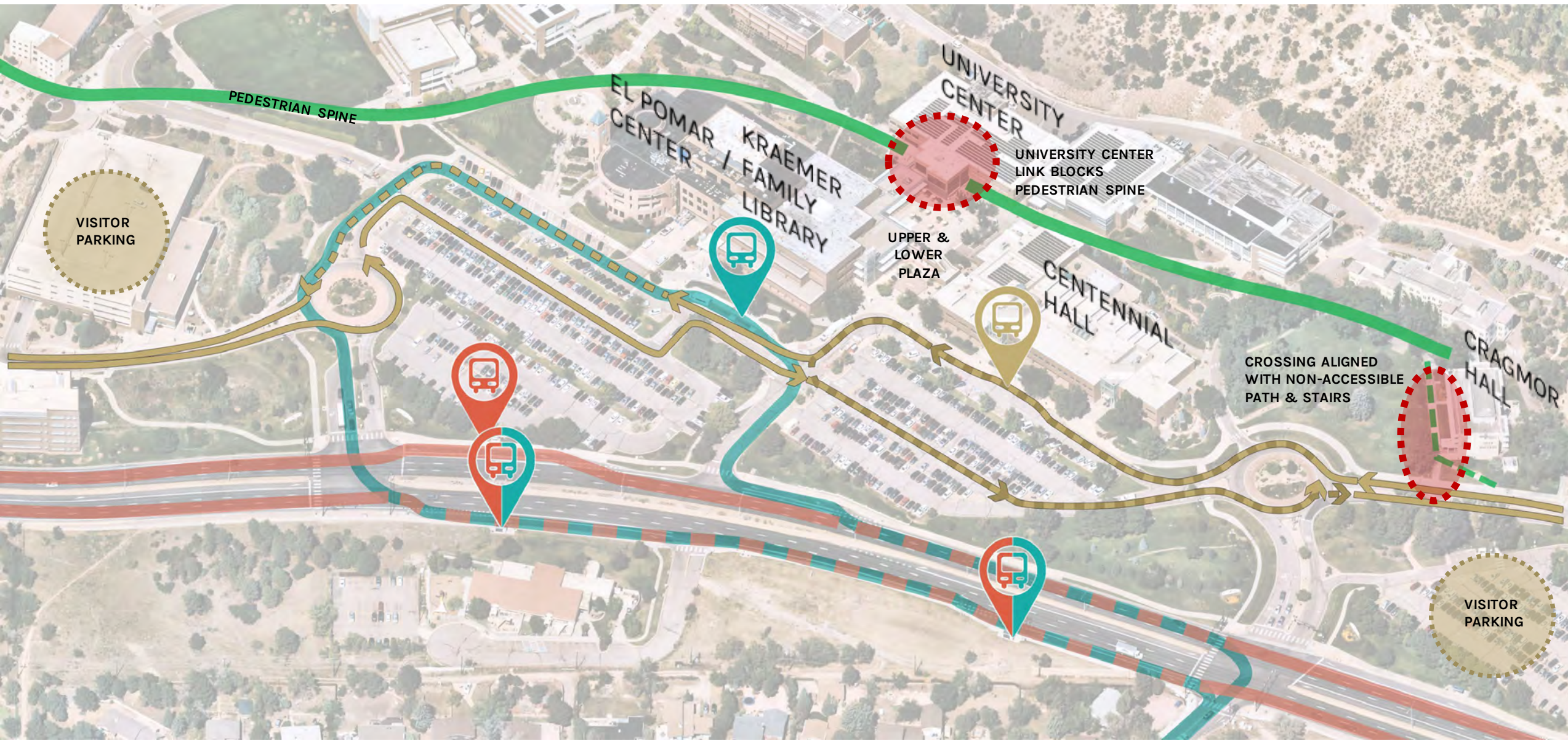
PUBLIC AND UNIVERSITY TRANSIT



CIRCULATION CONFLICTS IN CENTRAL CAMPUS



CIRCULATION CONFLICTS IN CENTRAL CAMPUS

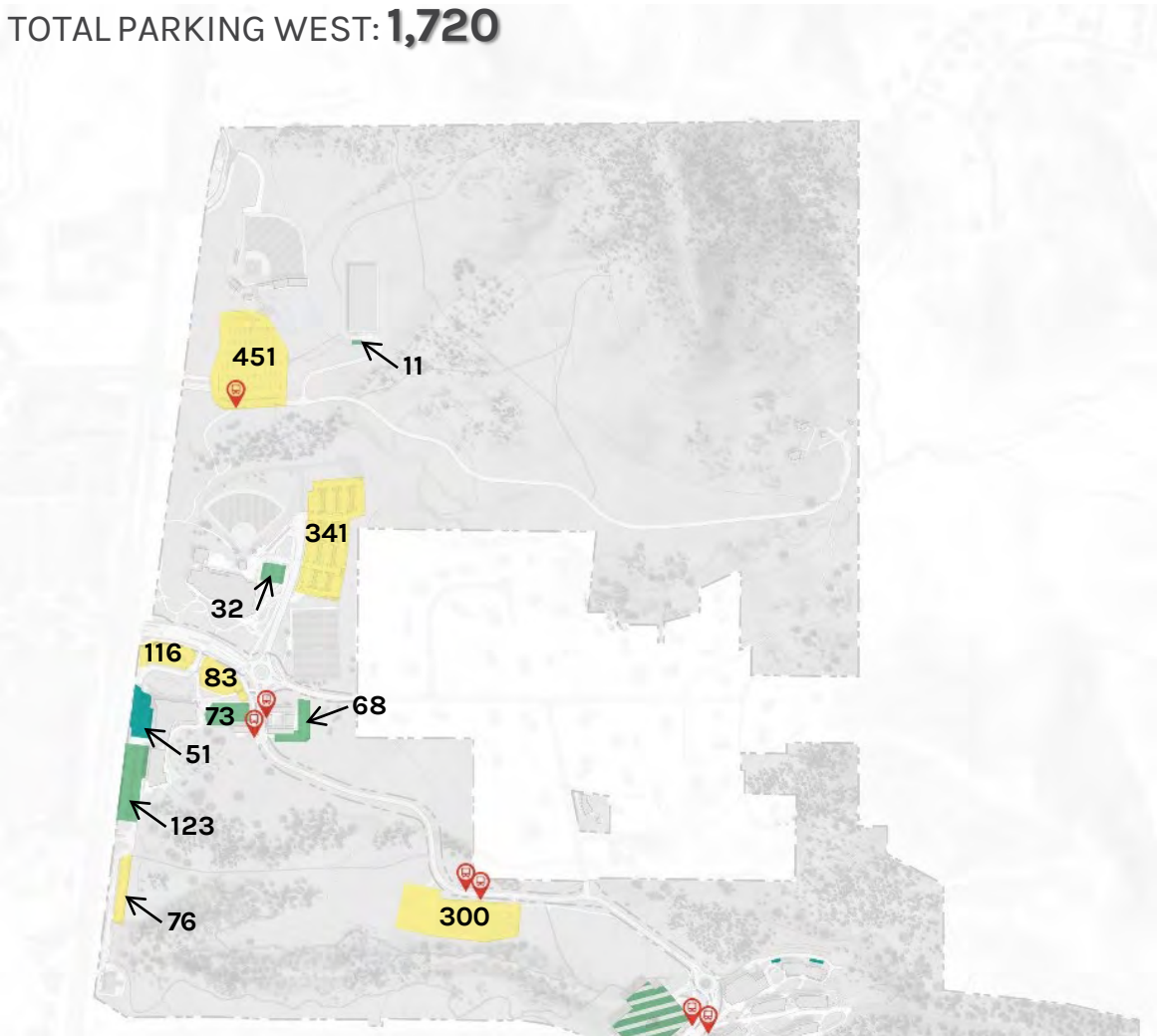


MOBILITY

PARKING: 5,600 TOTAL SPACES

WEST CAMPUS

TOTAL PARKING WEST: 1,720



CENTRAL AND EAST CAMPUS

TOTAL PARKING CENTRAL AND EAST: 3,850



LEGEND

- Permit Parking
- Visitor + Permit Parking
- Restricted by Time and/or Use
- Free Parking
- Campus Shuttle Stop

CAMPUS LANDSCAPE

INTEGRAL TO CAMPUS IDENTITY



PEDESTRIAN SPINE



THE BLUFFS



MATURE TREES



VILLAGES

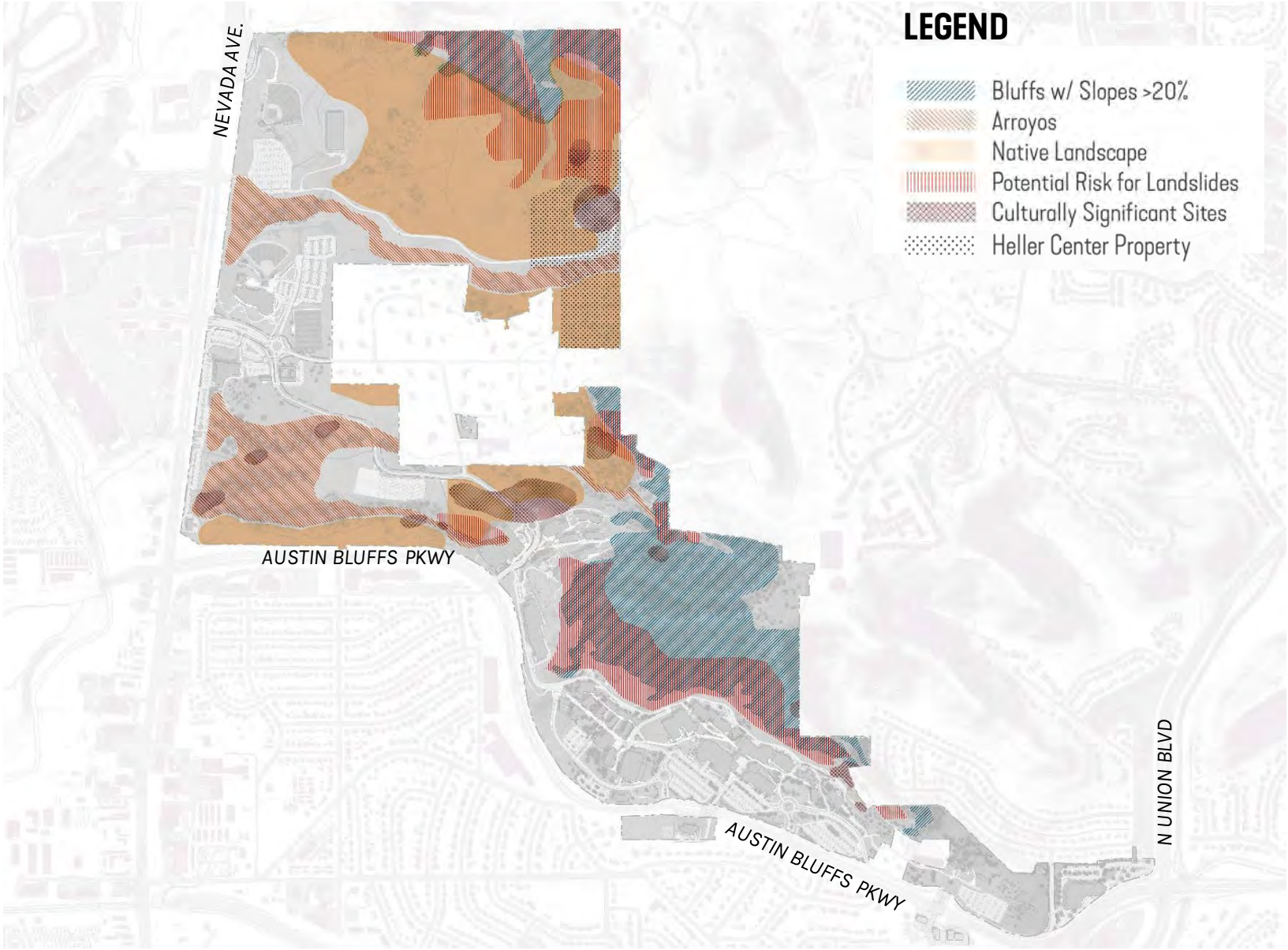


MOUNTAIN VIEWS



NATURALIZED PLANTINGS

LANDSCAPE TYPOLOGIES AND CULTURAL RESOURCES





SUMMARY & GUIDING PRINCIPLES

UCCS PRIMARY STRENGTHS

LOCATION

- Colorado Springs location and resources are unique
- Numerous opportunities to engage the community

EDUCATIONAL MISSION

- Cultural, clinical, research, and service resources benefit town and gown
- Emerging role of STEM

CAMPUS EXPERIENCE

- Medium scale campus and enrollment is attractive
- Strong sense of campus community
- Unique location, climate, geology, landscape, history and place
- Sustainable environmental, economic, and social justice ethos

HOUSING

- Scale, placement, and design of student housing reinforces community

ATHLETICS & RECREATION

- Expanding athletics and recreational venues

PRELIMINARY KEY ISSUES & OPPORTUNITIES

CAMPUS EXPERIENCE

- Make the campus more compact & connected.
 - Rethink East Campus
 - Focus on Clyde Way
- Reinforce first-time & community visitor experience. Create a front door.
- Make the campus more legible and intuitive

PROGRAMMATIC NEEDS

- Address needs for current and project enrollment projections and research needs.
- Address needs for indoor & outdoor athletic & recreational space.

SUSTAINABLE FUTURE

- Focus on systems thinking which addresses the natural and built resources in a resilient and sustainable manner.
- Create a working landscape which incorporates flexible learning and event environments which exemplifies the mission of the University.

DRAFT GUIDING PRINCIPLES

BUILDING ON UCCS STRENGTHS

2012 Campus Plan Goals:

- Respect Campus Natural Features
- Reinforce Vibrant Campus Anchors
- Connect Campus Destinations

2022 Campus Plan Draft Guiding Principles:

- Develop a Resilient and Sustainable Campus which respects the Area's Natural Resources
- Improve the Legibility, Identity, and Experience of the Campus
- Connect the West and Central Campuses with a vibrant mix of uses

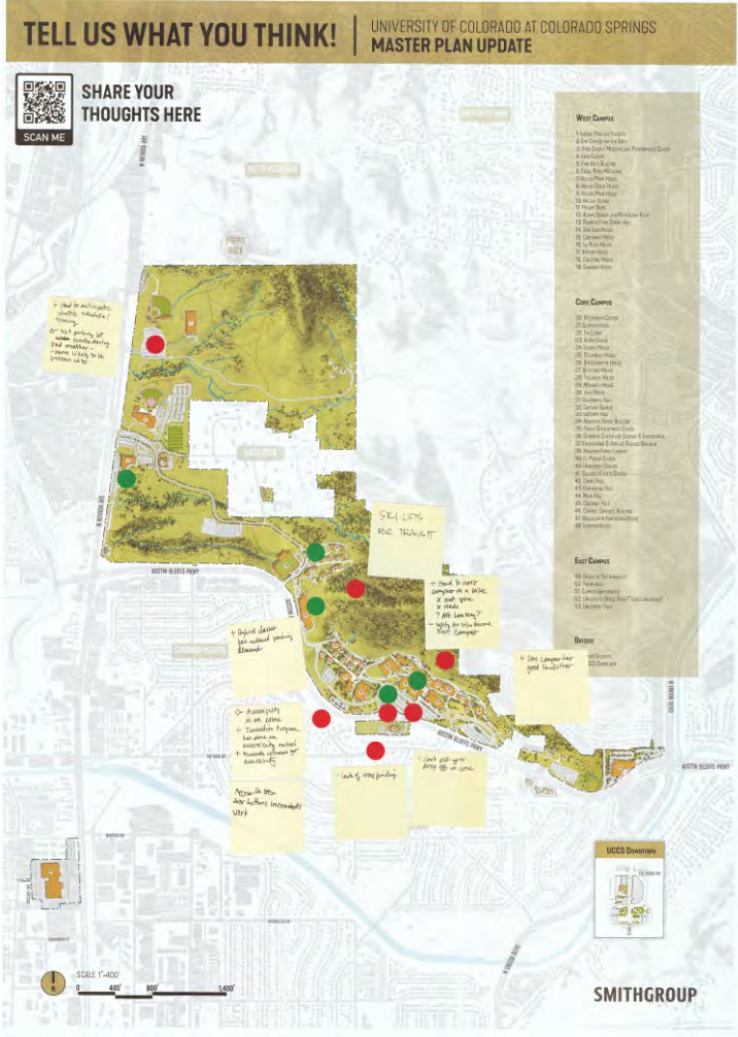
SUMMARY OF FEEDBACK



6

POP-UP ENGAGEMENT

RED-GREEN EXERCISE



SUMMARY OF FEEDBACK

OPEN SPACE

- Need more open spaces on campus:
 - Lawn and passive hangout space
 - Mountain Bike trails, skatepark
- West Lawn: improve it to make it a destination
- Landscape should be designed to feel collegiate, not like a community college

SPACE NEEDS

- Students need more spaces for group study & socializing
- Students need more quiet study space to attend virtual classes
- Faculty & Staff should only get an assigned desk if they are on campus 3 days / week or more
- Need to create hoteling space that is a mix of departments. Hoteling space should be desirable – make it a high-quality space people want to use

WAYFINDING & MOBILITY

- Wayfinding is very difficult
- Visitor Center – create a landing pad for visitors to get information & directions
- Austin Bluffs Pkwy is dangerous to cross
- People like free parking but getting to campus from the lot near athletics takes too long.
- Missing pedestrian connections & accessible routes
- Distance from East to West campuses is a challenge

ARTS FACILITIES & FUTURE PROJECTS

- Arts Village Plan was a moonshot, can be reduced in scope and combined to one building
- Current facilities are in very poor condition

HOUSING

- Summit Village lacks communal space on the floors. Renovate to remove some units on every floor to add lounge space